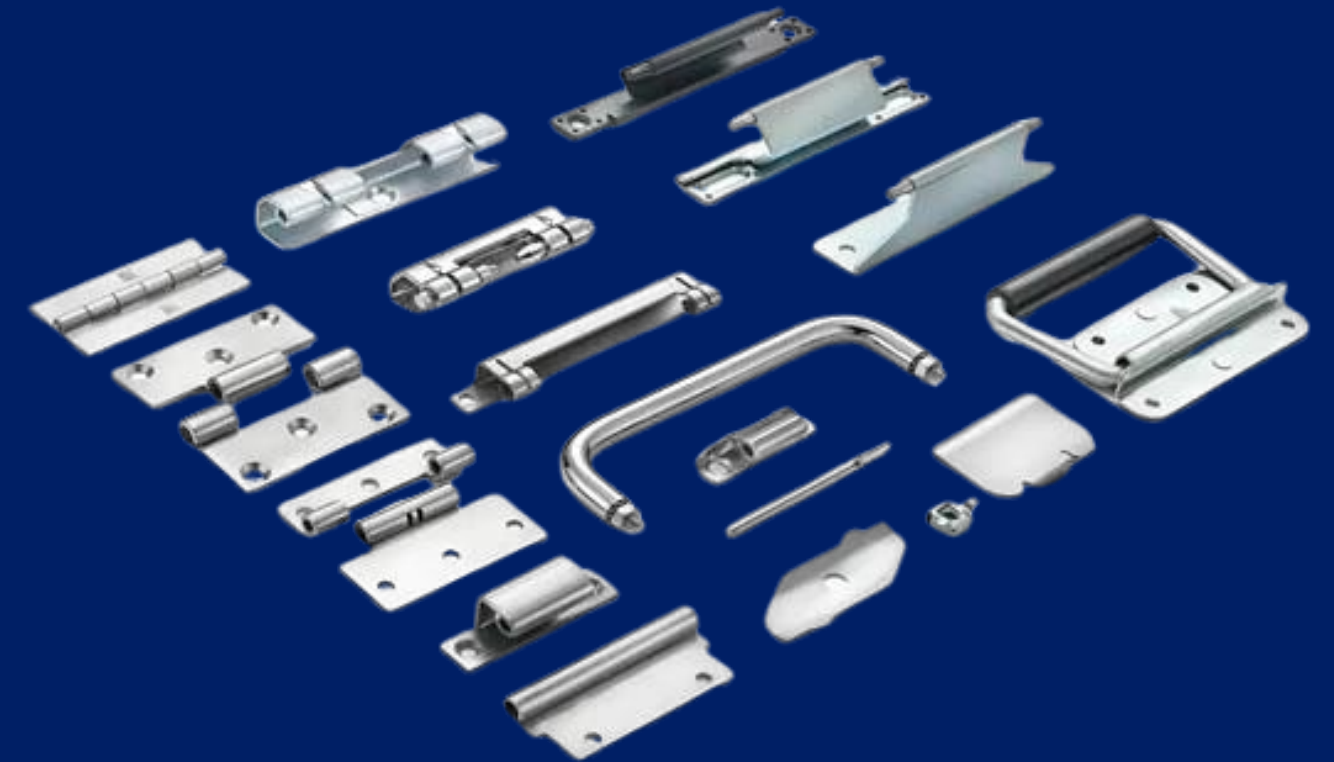


**PROTECH INDIA :**  
**For reliable and customized**  
**Control Panel Accessories**



## Introduction:

PROTECH INDIA is a leading manufacturer specializing in Control Panel Accessories, featuring base materials of Zinc Alloy, Aluminum, Stainless Steel 316, 304 , PA6, & multiple surface treatments like zinc blue passivation, Nickle chrome, anodizing, ED coating, Powder coating, Satin polish, for durability and aesthetics.



Electrical & Electronics



Aerospace



Applications

Railway



Agricultural



## Solar energy Inverter



## Wind energy Inverter



# Applications

## IT Data Center



## CNC Machineries



# Product Index

Hinges



Q-Turn Locks



Presslocks



Accessories



Handles



Handle Locks



Swing Locks



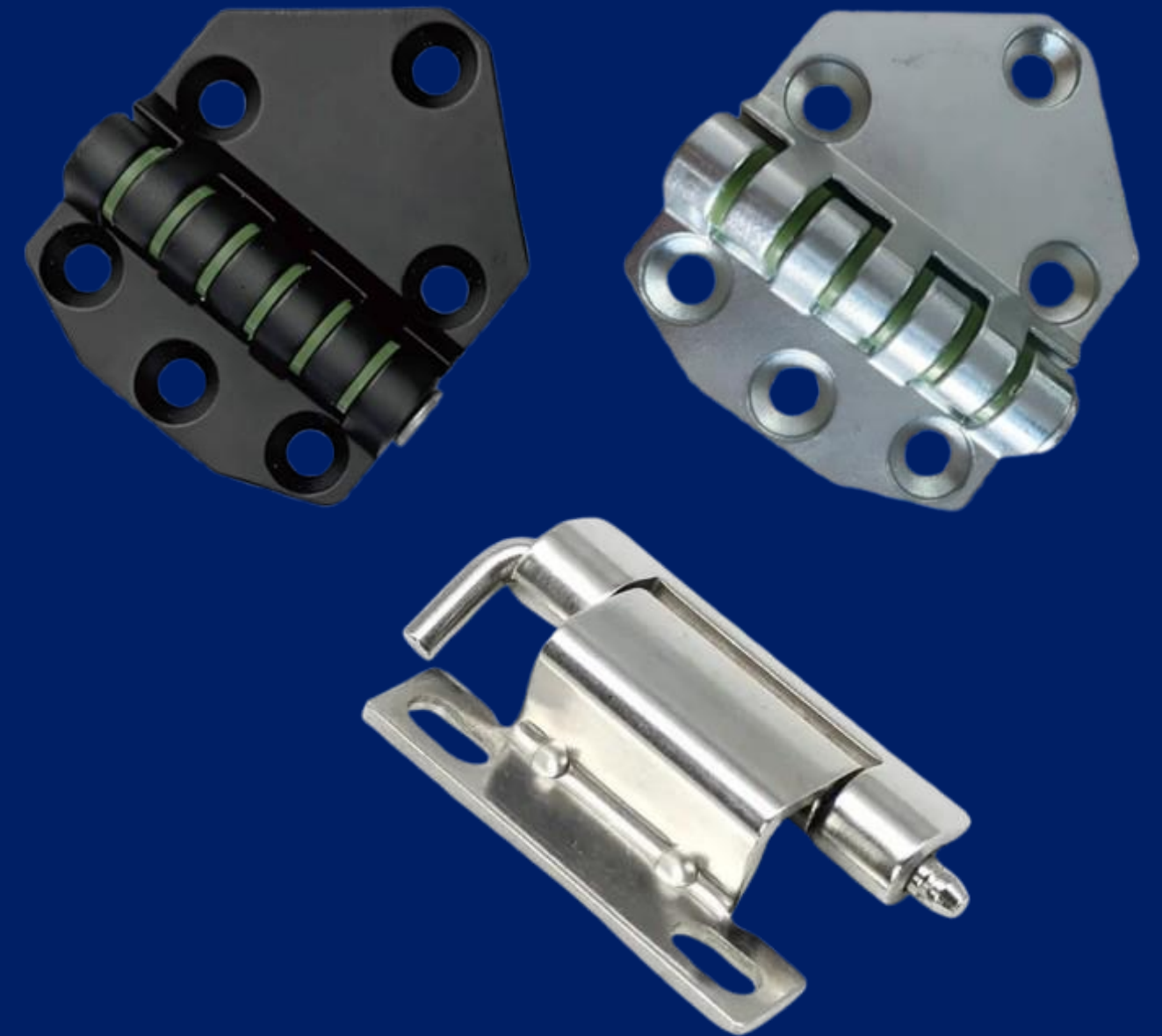
Latch Locks



## Hinges:

We manufacture comprehensive range of Hinges In variant types cabin hinge, lift off hinge, corner hinge, concealed hinge, steel hinge ..etc. & variant surface finish black, nickel chrome , mirror finish etc..

we support customers by developing customized hinges.



# Hinges Overview:

PROTECH INDIA hinged solutions: materials, finishes, and model ranges for control panels.

**Types:** Corner hinges, Tube hinges, Slope hinges, L-shaped hinges, Concealed hinges, Cabin hinge.

**Materials:** Zinc alloy; Carbon steel; 304 stainless steel.

**Finishes:** Black powder coating; bright chromium; sand blast.

**Models:** Product line PTICPA1001 to PTICPA1034

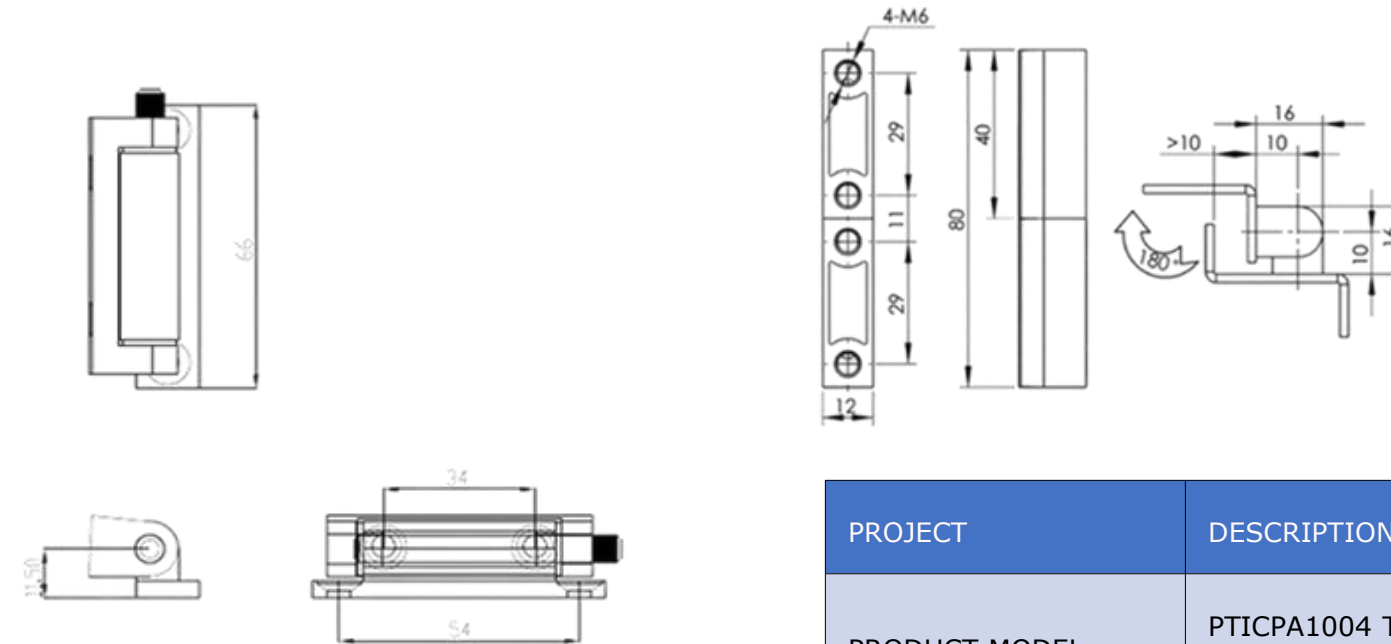
Designed for varied mounting and movement; surface treatments for corrosion resistance.



**PTICPA1001**



PROJECT	DESCRIPTION
PRODUCT MODEL	CORNER HINGE 180°
MAIN MATERIAL	ZINC ALLOY
SURFACE TREATMENT	BLACK POWDER COATED



**PTICPA1004**  
**PTICPA1005**

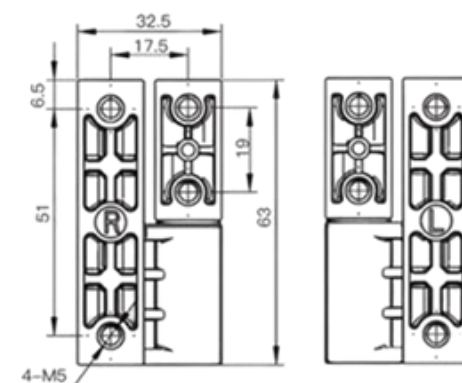


PROJECT	DESCRIPTION
PRODUCT MODEL	PTICPA1004 TUBE HINGE BLACK PTICPA1005 TUBE HINGE BLACK
MAIN MATERIAL	ZINC ALLOY
SURFACE TREATMENT	BLACK / BRIGHT CHROMIUM

**PTICPA1002**  
**PTICPA1003**



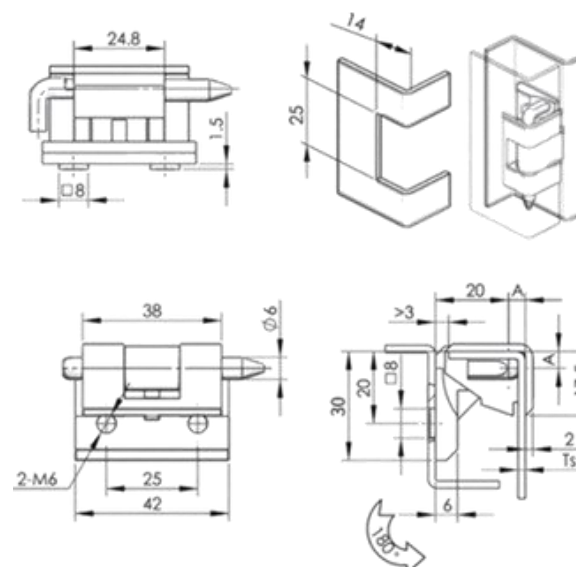
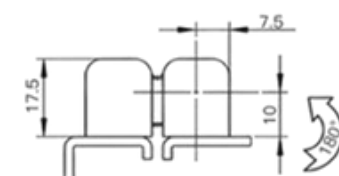
PROJECT	DESCRIPTION
PRODUCT MODEL	PTICPA1002 HINGE BLACK PTICPA1003 HINGE MATTE
MAIN MATERIAL	ZINC ALLOY
SURFACE TREATMENT	BLACK / BRIGHT CHROMIUM



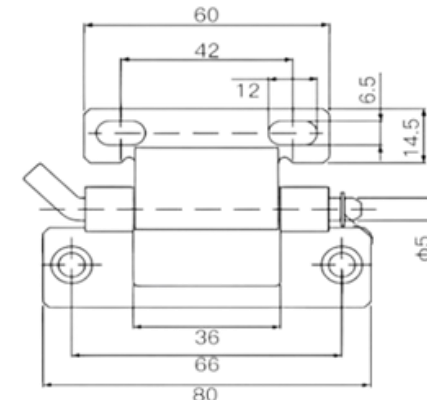
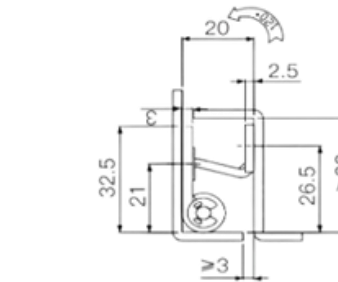
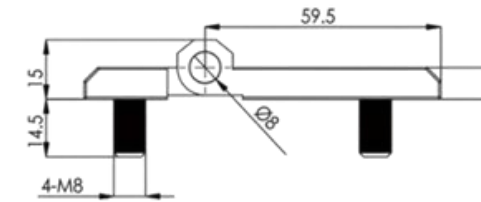
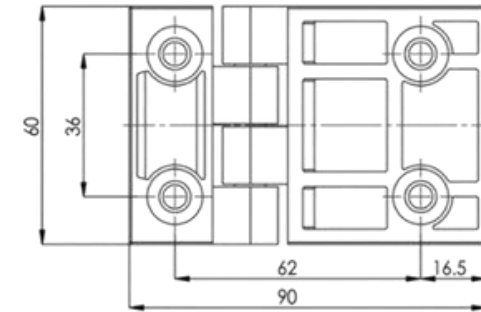
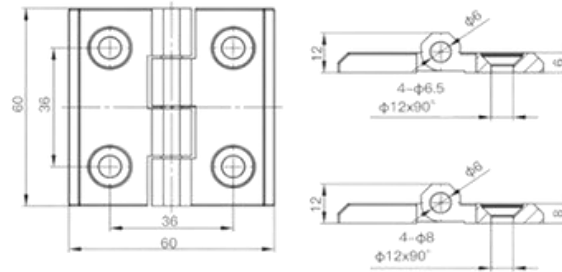
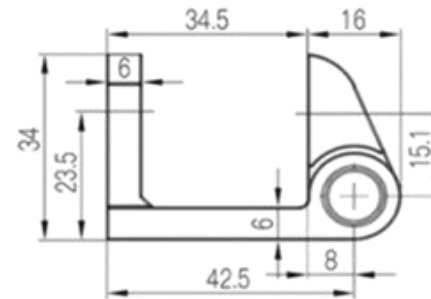
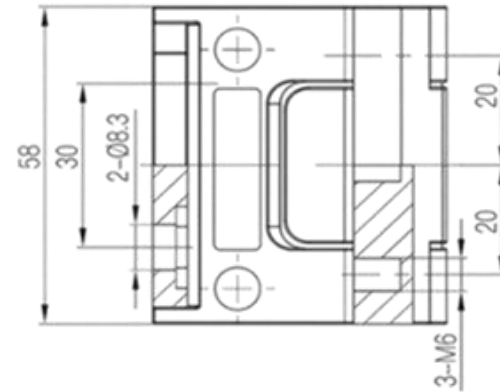
**PTICPA1006**  
**PTICPA1007**  
**PTICPA1008**



PROJECT	DESCRIPTION
PRODUCT MODEL	PTICPA1006 L HINGE BLACK PTICPA1007 L HINGE MATT PTICPA1008 L HINGE BRIGHT
MAIN MATERIAL	ZINC ALLOY
SURFACE TREATMENT	BLACK / BRIGHT CHROMIUM



**PTICPA1009**  
**PTICPA1010**



**PTICPA1013**  
**PTICPA1014**



PROJECT	DESCRIPTION
PRODUCT MODEL	PTICPA1013 HINGE BLACK PTICPA1014 HINGE MATTE
MAIN MATERIAL	ZINC ALLOY
SURFACE TREATMENT	BLACK / BRIGHT CHROMIUM

**PTICPA1011**  
**PTICPA1012**



PROJECT	DESCRIPTION
PRODUCT MODEL	PTICPA1011 SQ. 60 HINGE BLACK PTICPA1012 SQ. 60 HINGE CHROME
MAIN MATERIAL	ZINC ALLOY
SURFACE TREATMENT	POWDER COATED CHROME PLATED

**PTICPA1015**

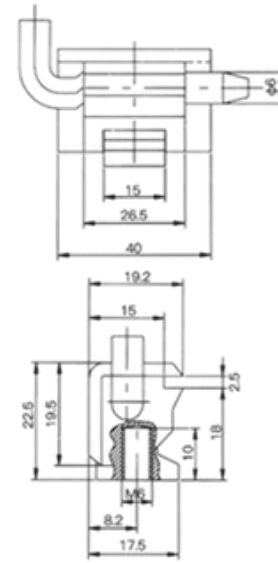


PROJECT	DESCRIPTION
PRODUCT MODEL	STEEL HINGE ZINC BLUE PASSIVATION
MAIN MATERIAL	CARBON STEEL
SURFACE TREATMENT	BLUE WHITE ZINC PLATING

**PTICPA1016**  
**PTICPA1017**



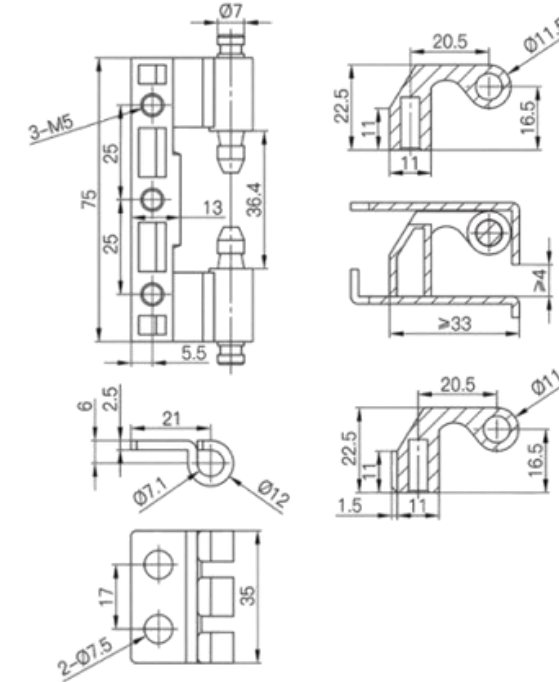
PROJECT	DESCRIPTION
PRODUCT MODEL	PTICPA1016 HINGE 40MM PTICPA1017 HINGE 30MM
MAIN MATERIAL	ZINC ALLOY
SURFACE TREATMENT	BLACK



**PTICPA1019**



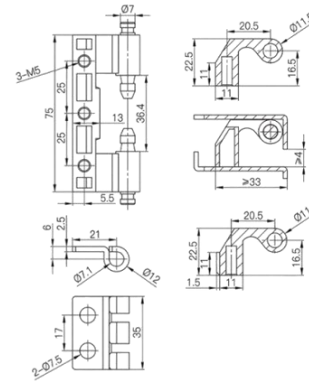
PROJECT	DESCRIPTION
PRODUCT MODEL	HINGE
MAIN MATERIAL	ZINC ALLOY
SURFACE TREATMENT	BLACK / SAND BLAST



**PTICPA1018**



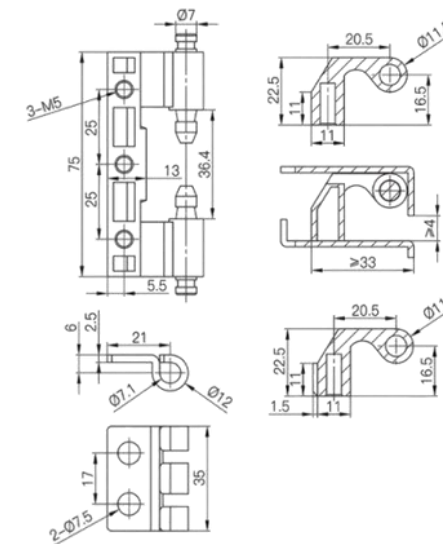
PROJECT	DESCRIPTION
PRODUCT MODEL	HINGE BLACK
MAIN MATERIAL	ZINC ALLOY
SURFACE TREATMENT	POWDER COATED CHROME PLATED



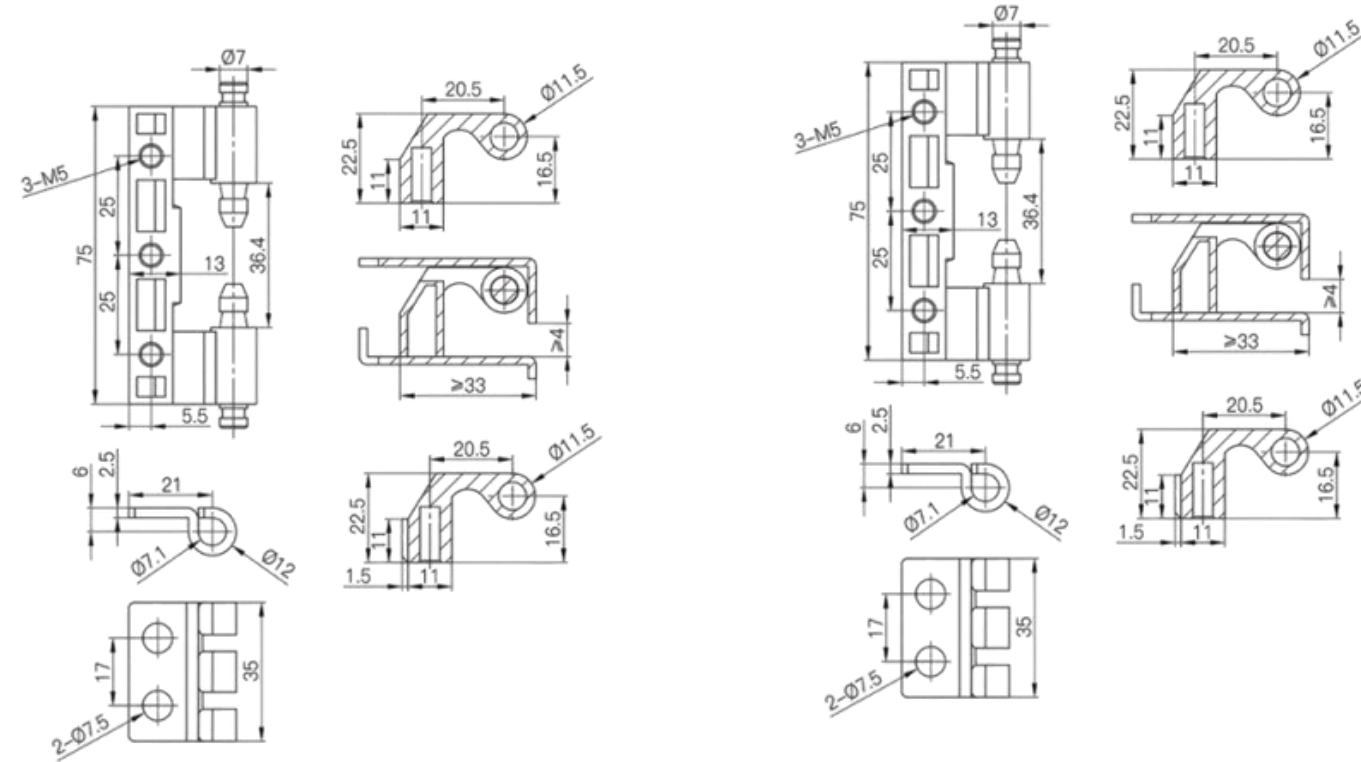
**PTICPA1020**



PROJECT	DESCRIPTION
PRODUCT MODEL	HINGE BLACK WEAKEN
MAIN MATERIAL	ZINC ALLOY
SURFACE TREATMENT	BLACK / SAND BLAST



### PTICPA1021



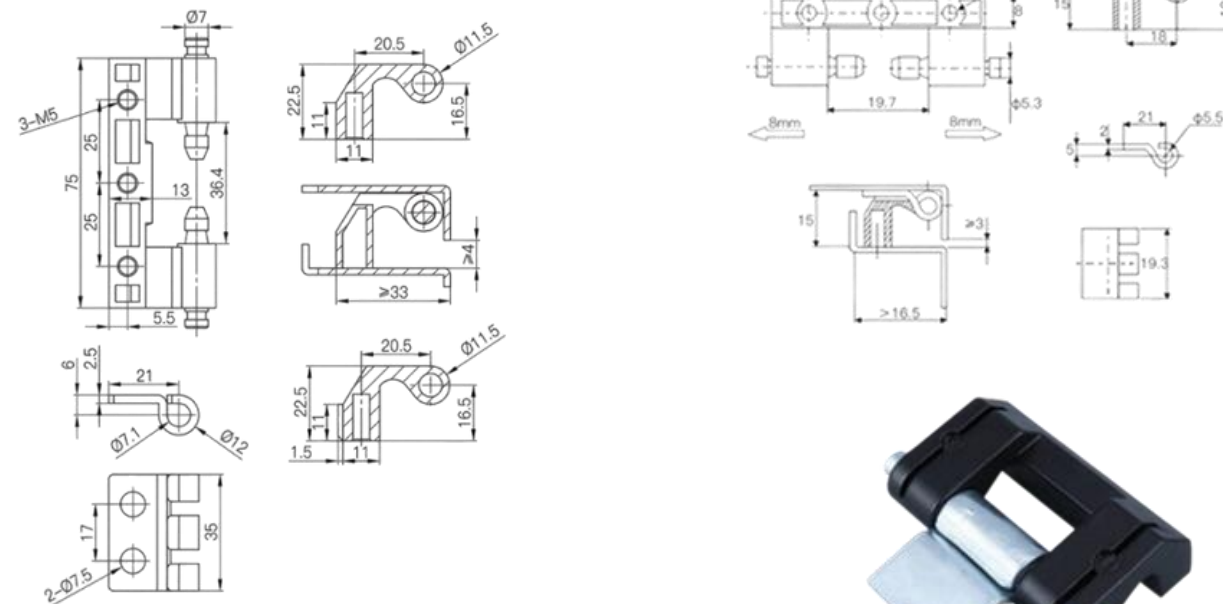
PROJECT	DESCRIPTION
PRODUCT MODEL	HINGE SAND WEAKEN
MAIN MATERIAL	ZINC ALLOY
SURFACE TREATMENT	BLACK / SAND BLAST

### PTICPA1023



PROJECT	DESCRIPTION
PRODUCT MODEL	HINGE SAND REINFORCED
MAIN MATERIAL	ZINC ALLOY
SURFACE TREATMENT	BLACK / SAND BLAST

### PTICPA1022



PROJECT	DESCRIPTION
PRODUCT MODEL	HINGE BLACK REINFORCED
MAIN MATERIAL	ZINC ALLOY
SURFACE TREATMENT	BLACK / SAND BLAST

### PTICPA1024

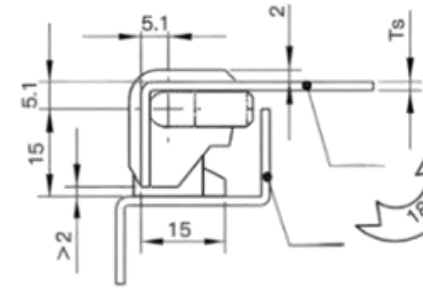
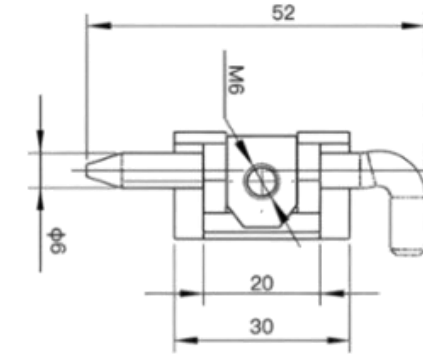
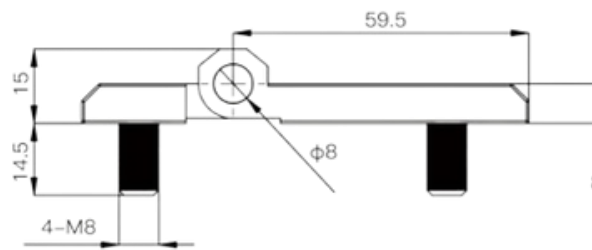
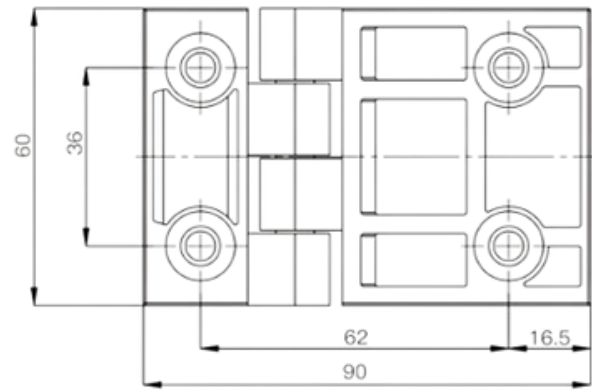


PROJECT	DESCRIPTION
PRODUCT MODEL	HINGE BLACK
MAIN MATERIAL	ZINC ALLOY
SURFACE TREATMENT	BLACK

**PTICPA1025**



PROJECT	DESCRIPTION
PRODUCT MODEL	HINGE WITH STUD
MAIN MATERIAL	304 STAINLESS STEEL
SURFACE TREATMENT	MIRROR FINISH / BRUSHED



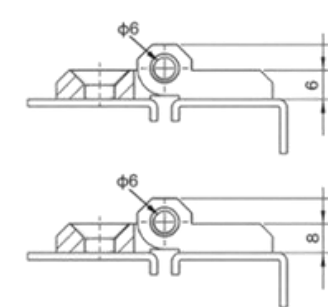
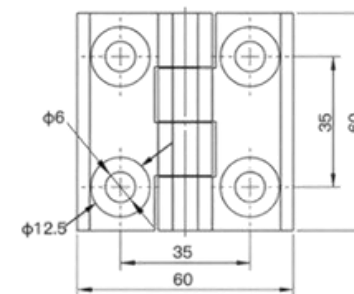
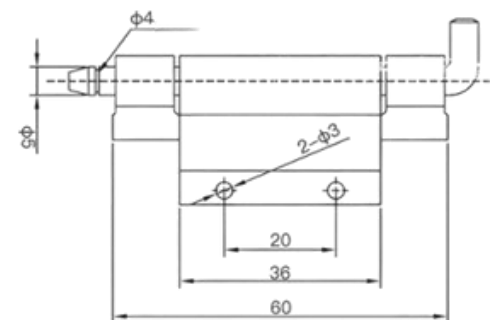
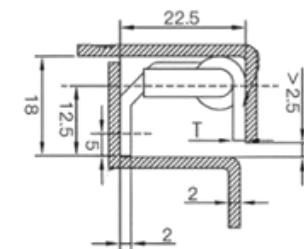
**PTICPA1027**

PROJECT	DESCRIPTION
PRODUCT MODEL	L HINGE SS
MAIN MATERIAL	304 STAINLESS STEEL
SURFACE TREATMENT	MIRROR FINISH / BRUSHED

**PTICPA1026**



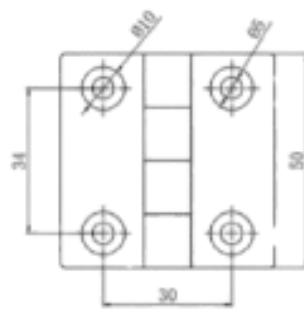
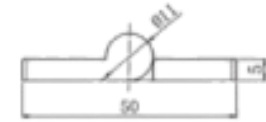
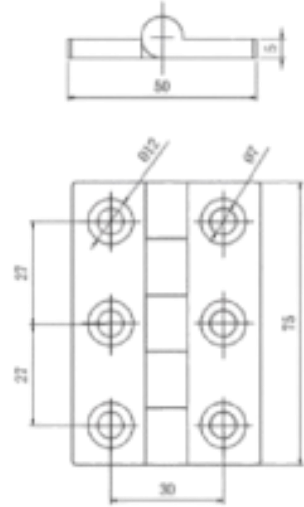
PROJECT	DESCRIPTION
PRODUCT MODEL	HINGE SS
MAIN MATERIAL	304 STAINLESS STEEL
SURFACE TREATMENT	MIRROR FINISH / BRUSHED



**PTICPA1028**

PROJECT	DESCRIPTION
PRODUCT MODEL	SQ. 60 HINGE SS
MAIN MATERIAL	304 STAINLESS STEEL
SURFACE TREATMENT	MIRROR FINISH / BRUSHED

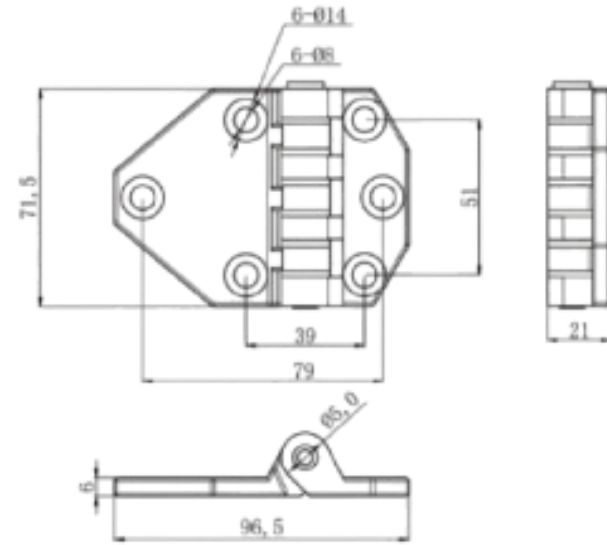
**PTICPA1029**



200H

PROJECT	DESCRIPTION
PRODUCT MODEL	HINGE PART
MAIN MATERIAL	304 STAINLESS STEEL
SURFACE TREATMENT	200 HOURS OF SST

**PTICPA1030**



PROJECT	DESCRIPTION
PRODUCT MODEL	CABIN HINGE
MAIN MATERIAL	MANGANESE STEEL CASTING
SURFACE TREATMENT	40 HOURS OF SST

## Handles:

We manufacture comprehensive range of Handle products based on application those are like SS304 handles, Aluminum Handles, PA handles, foldable Handle, roatatble Handle, lift Handle, Dish handle. We support customers by developing customized handles.



# Handles Overview – Types, Materials & Models

Quick reference for control-panel handles: variants, materials, finishes, and model range.

**Types:** Folded, lift, foldable handles for control panels.

**Materials:** zinc alloy, stainless steel; ABS and PA for lift handles

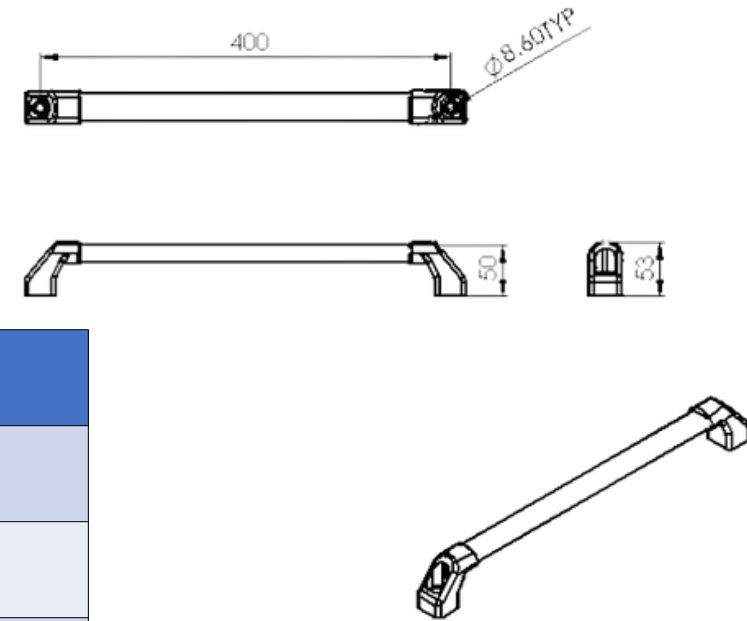
**Surface treatments:** Powder coating, bright chromium, mirror polishing.

**Models:** PTICPA2003 to PTICPA2017 covering multiple sizes and finishes.

Design focus: ergonomic, durable; supports static and dynamic loads.

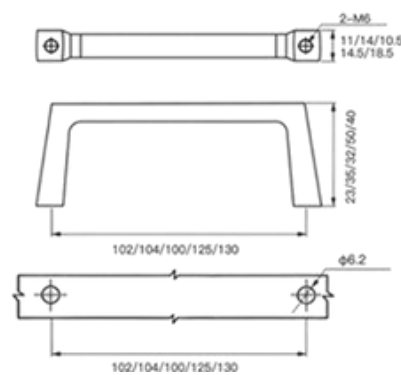


### PTICPA2001

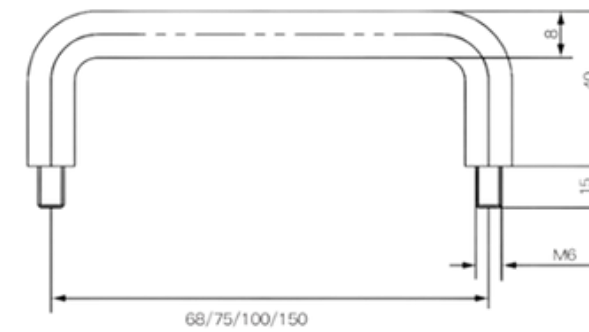
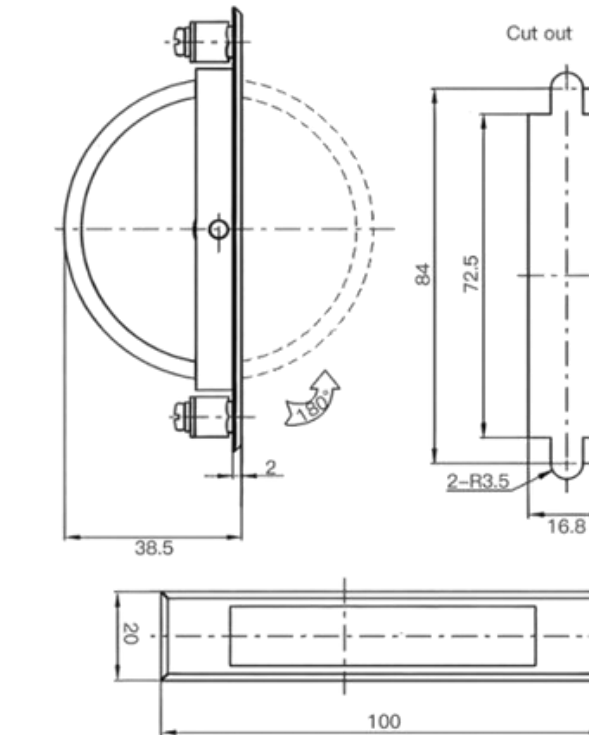


PROJECT	DESCRIPTION
PRODUCT MODEL	
MAIN MATERIAL	ZINC ALLOY
SURFACE TREATMENT	BLACK

### PTICPA2002 PTICPA2003



PROJECT	DESCRIPTION
PRODUCT MODEL	PTICPA2003 HANDE BLACK PTICPA2004 HANDLE MATTE
MAIN MATERIAL	ZINC ALLOY
SURFACE TREATMENT	POWDER COATED CHROME PLATED



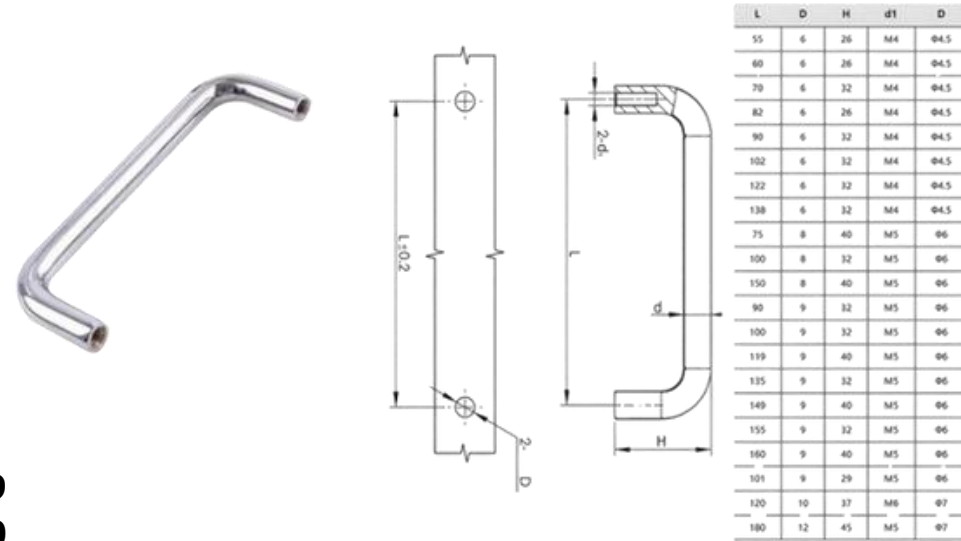
### PTICPA2004 PTICPA2005 PTICPA2006



PROJECT	DESCRIPTION
PRODUCT MODEL	PTICPA2004 HANDE BLACK PTICPA2005 HANDLE MATTE PTICPA2006 HANDLE BRIGHT
MAIN MATERIAL	ZINC ALLOY
SURFACE TREATMENT	BLACK / SAND CHROMIUM / BRIGHT CHROMIUM

### PTICPA2007 PTICPA2008

PROJECT	DESCRIPTION
PRODUCT MODEL	PTICPA2007 HANDLE SS304 8x100mm PTICPA2008 HANDLE SS304 8x150mm
MAIN MATERIAL	STAINLESS STEEL
SURFACE TREATMENT	MIRROR POLISHED



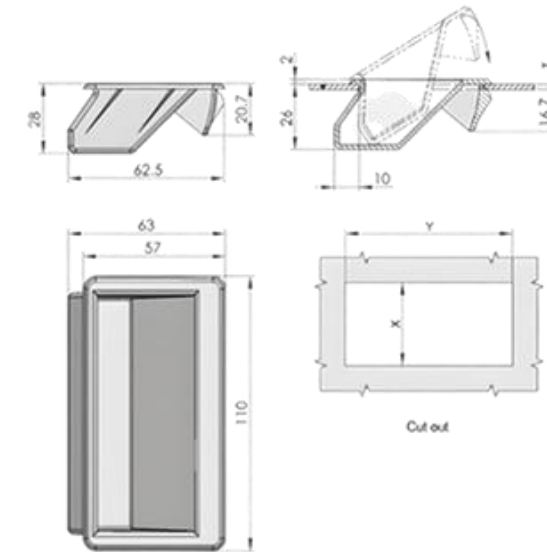
**PTICPA2009**  
**PTICPA2010**

PROJECT	DESCRIPTION
PRODUCT MODEL	PTICPA2009 HANDLE 8x100mm PTICPA2010 HANDLE 10x120mm
MAIN MATERIAL	STAINLESS STEEL
SURFACE TREATMENT	BRIGHT CHROMIUM



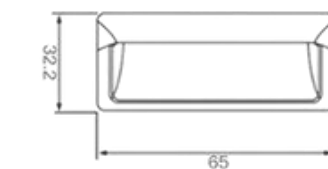
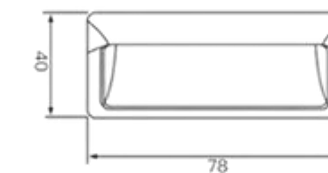
**PTICPA2013**

PROJECT	DESCRIPTION
PRODUCT MODEL	LIFT HANDLE BLACK 110mm
MAIN MATERIAL	PA
SURFACE TREATMENT	BLACK

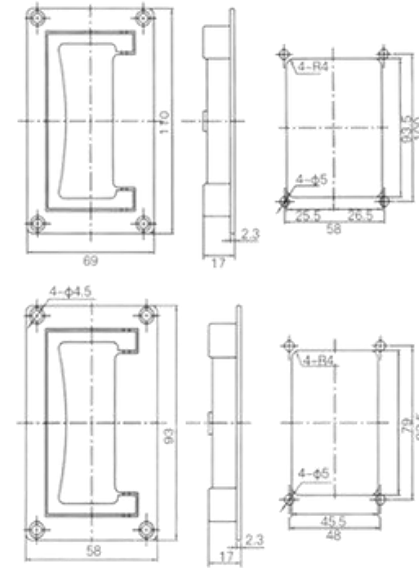


**PTICPA2011**  
**PTICPA2012**

PROJECT	DESCRIPTION
PRODUCT MODEL	PTICPA2011 LIFT HANDLE BLACK 78mm PTICPA2012 LIFT HANDLE MATT 78mm
MAIN MATERIAL	ABS
SURFACE TREATMENT	BLACK / OFF WHITE

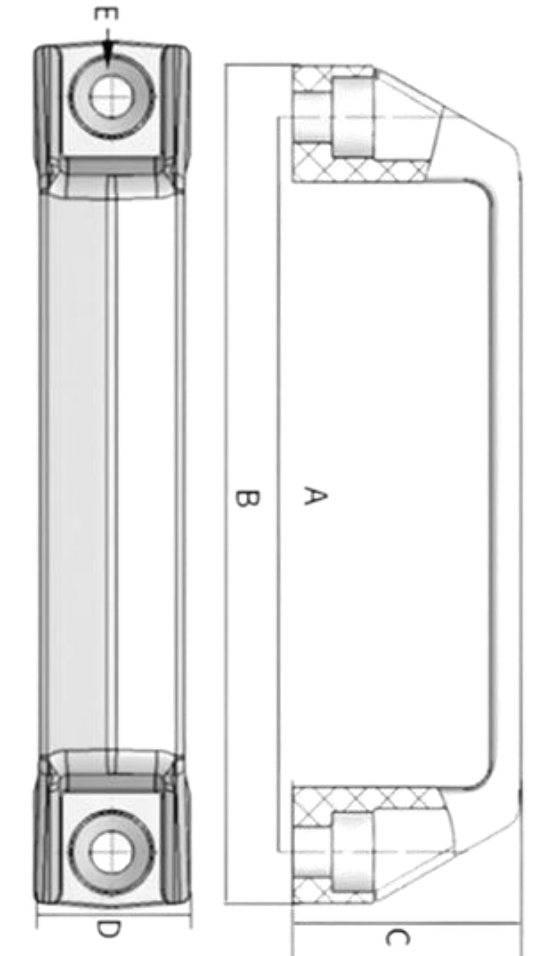


**PTICPA2014**  
**PTICPA2015**  
**PTICPA2016**  
**PTICPA2017**



PROJECT	DESCRIPTION
PRODUCT MODEL	PTICPA2014 FOLDABLE HANDLE 93mm BLACK PTICPA2015 FOLDABLE HANDLE 93mm Matt PTICPA2016 FOLDABLE HANDLE 110mm BLACK PTICPA2017 FOLDABLE HANDLE 110mm Matt
MAIN MATERIAL	ZINC ALLOY
SURFACE TREATMENT	ZINC ALLOY / BLACK SAND CHROMIUM

**PTICPA2018**



PROJECT	DESCRIPTION
PRODUCT MODEL	HANDLE BLACK 120mm
MAIN MATERIAL	ZINC ALLOY
SURFACE TREATMENT	BLACK / BRIGHT CHROMIUM

## Quarter Turn Locks:

We manufacture comprehensive range of Control Panel Quarter turn locks, Triangle, Square, Wing Type, Pad lock type & key versioned & we support customers by developing customized Quarter Turn locks.



## Q-Turn Locks Overview:

Overview of types, materials, mechanisms, finishes and model range.

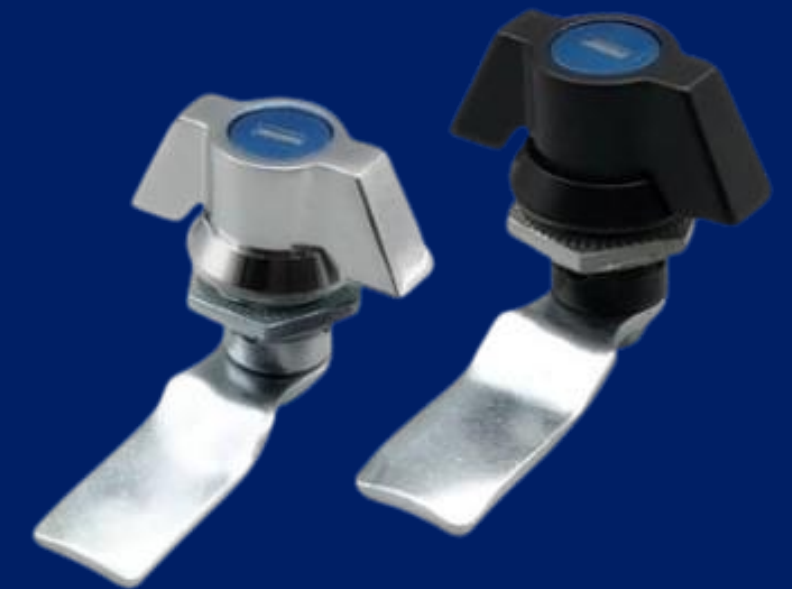
**Lock types:** Quarter-turn (Q-turn) locks for panel access.

**Materials:** Zinc alloy and stainless steel for strength and corrosion resistance.

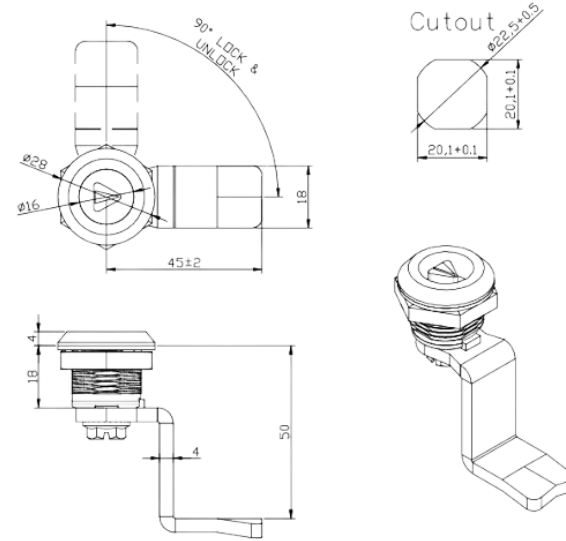
**Mechanisms:** Robust locking mechanisms designed for tamper resistance and ease of operation.

**Lock styles:** Triangle, Square, DB-3, DB-5 & Wing lock designs.

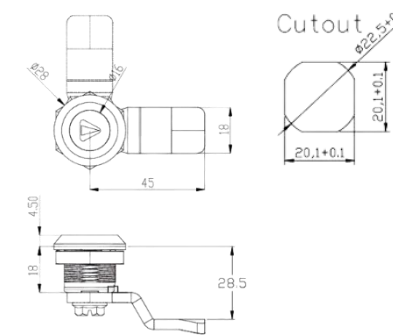
Finishes: Bright chromium and black coatings for durability and aesthetics



**PTICPA3001**



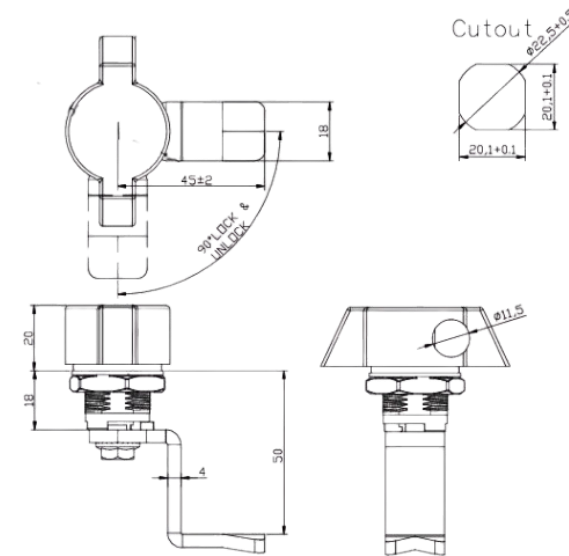
PROJECT	DESCRIPTION
PRODUCT MODEL	QT. LOCK BH 32mm
MAIN MATERIAL	ZINC ALLOY
SURFACE TREATMENT	CHROMIUM



**PTICPA3003**

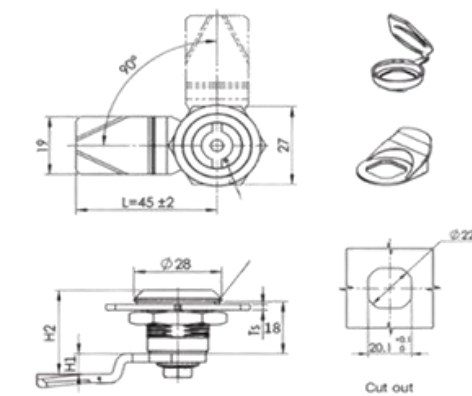
PROJECT	DESCRIPTION
PRODUCT MODEL	QT. LOCK BH 10.5mm
MAIN MATERIAL	ZINC ALLOY
SURFACE TREATMENT	CHROMIUM

**PTICPA3002**



**PTICPA3004  
PTICPA3005**

PROJECT	DESCRIPTION
PRODUCT MODEL	PTICPA3004 QT. LOCK TRIANGLE PTICPA3005 QT. LOCK SQUARE
MAIN MATERIAL	ZINC ALLOY
SURFACE TREATMENT	SATIN POLISH



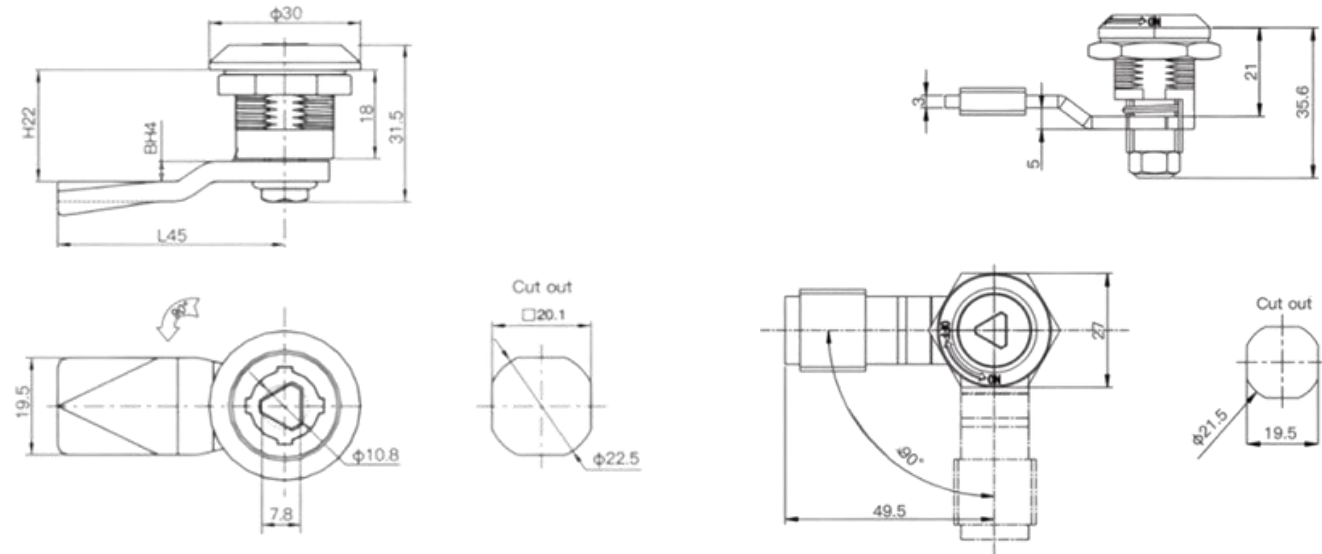
PROJECT	DESCRIPTION
PRODUCT MODEL	WING KNOB QT.LOCK
MAIN MATERIAL	SS316
SURFACE TREATMENT	SATIN POLISH

MEASURE	MEASURE	MEASURE	MEASURE	MEASURE	NAME	MEASURE
10mm	12mm	17mm	5mm	7mm	H1	3mm
28mm	30mm	35mm	23mm	25mm	H2	21mm

**PTICPA3006**  
**PTICPA3007**



PROJECT	DESCRIPTION
PRODUCT MODEL	PTICPA3006 QT. PUSH LOCK BLACK PTICPA3007 QT. PUSH LOCK BRIGHT
MAIN MATERIAL	ZINC ALLOY
SURFACE TREATMENT	BLACK / BRIGHT CHROMIUM



**PTICPA3011**

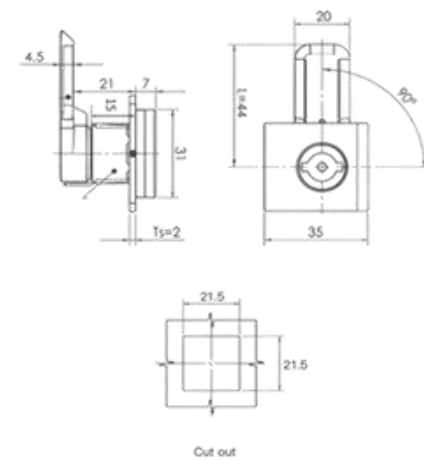


PROJECT	DESCRIPTION
PRODUCT MODEL	QT. LOCK TRIANGLE CHROME
MAIN MATERIAL	ZINC ALLOY
SURFACE TREATMENT	BRIGHT CHROMIUM

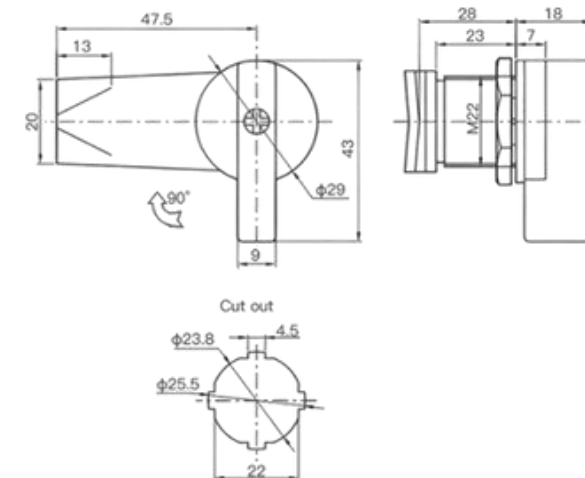
**PTICPA3008**  
**PTICPA3009**  
**PTICPA3010**



PROJECT	DESCRIPTION
PRODUCT MODEL	PTICPA3008 QT. SQUARE & PIN5 LOCK BLACK PTICPA3009 QT. SQUARE & PIN5 LOCK MATTE PTICPA3010 QT. SQUARE & PIN5 LOCK BRIGHT
MAIN MATERIAL	ZINC ALLOY
SURFACE TREATMENT	BLACK / BRIGHT / BEIGE

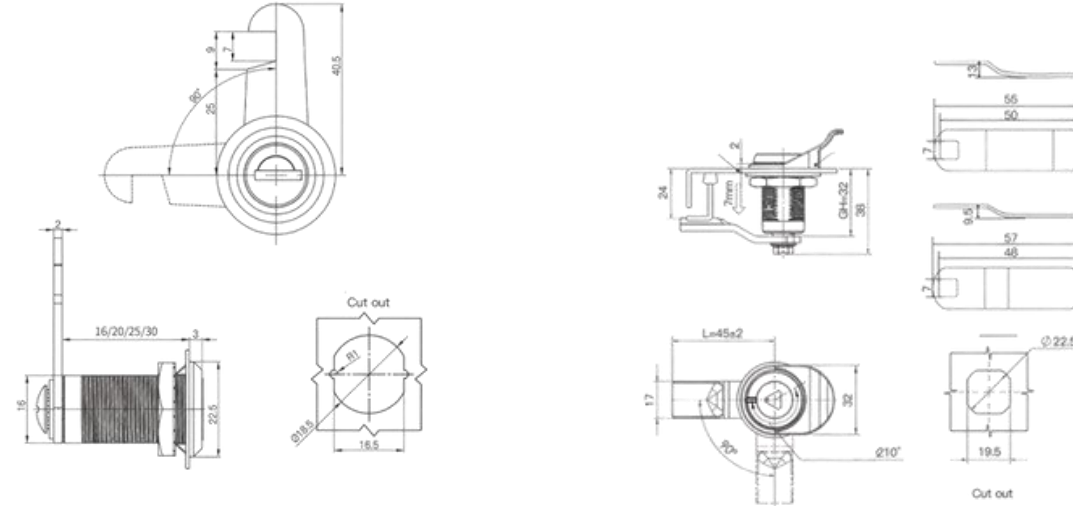


**PTICPA3012**



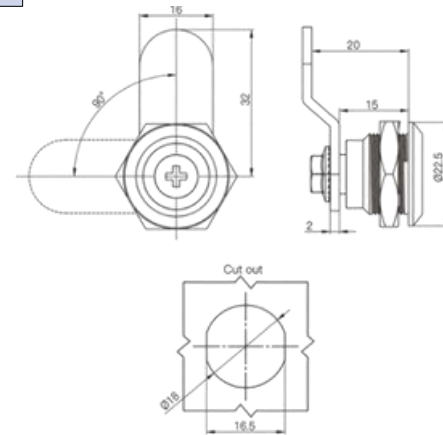
PROJECT	DESCRIPTION
PRODUCT MODEL	QT. PA WING LOCK BLACK
MAIN MATERIAL	ZINC ALLOY / PA
SURFACE TREATMENT	BLACK

### PTICPA3013



PROJECT	DESCRIPTION
PRODUCT MODEL	QUARTER TURN HOOK LOCK
MAIN MATERIAL	ZINC ALLOY
SURFACE TREATMENT	BRIGHT CHROMIUM

### PTICPA3014 PTICPA3015



PROJECT	DESCRIPTION
PRODUCT MODEL	PTICPA3008 Q TURN LOCK STAR KEY PTICPA3009 Q TURN LOCK PROFILE KEY
MAIN MATERIAL	ZINC ALLOY
SURFACE TREATMENT	BRIGHT CHROMIUM

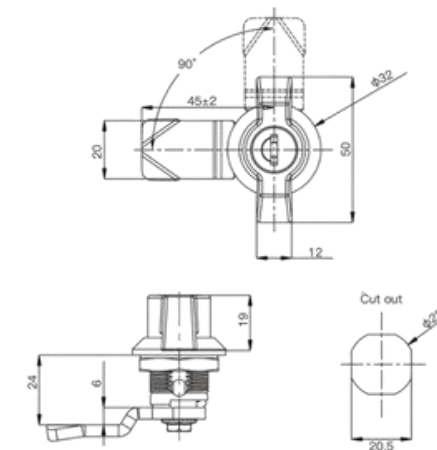


### PTICPA3016 PTICPA3017

PROJECT	DESCRIPTION
PRODUCT MODEL	PTICPA3016 RAPELLING GEAR BLACK PTICPA3017 RAPELLING GEAR BRIGHT
MAIN MATERIAL	ZINC ALLOY
SURFACE TREATMENT	BRIGHT / BLACK / GREY

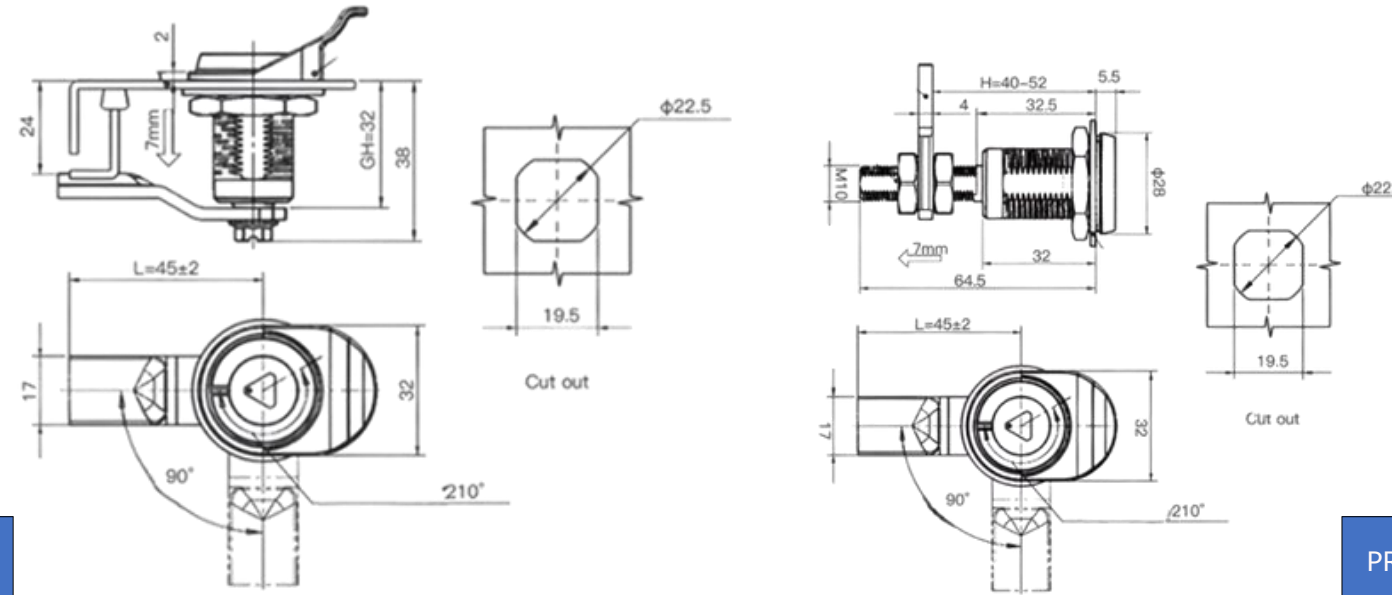


### PTICPA3018 PTICPA3019



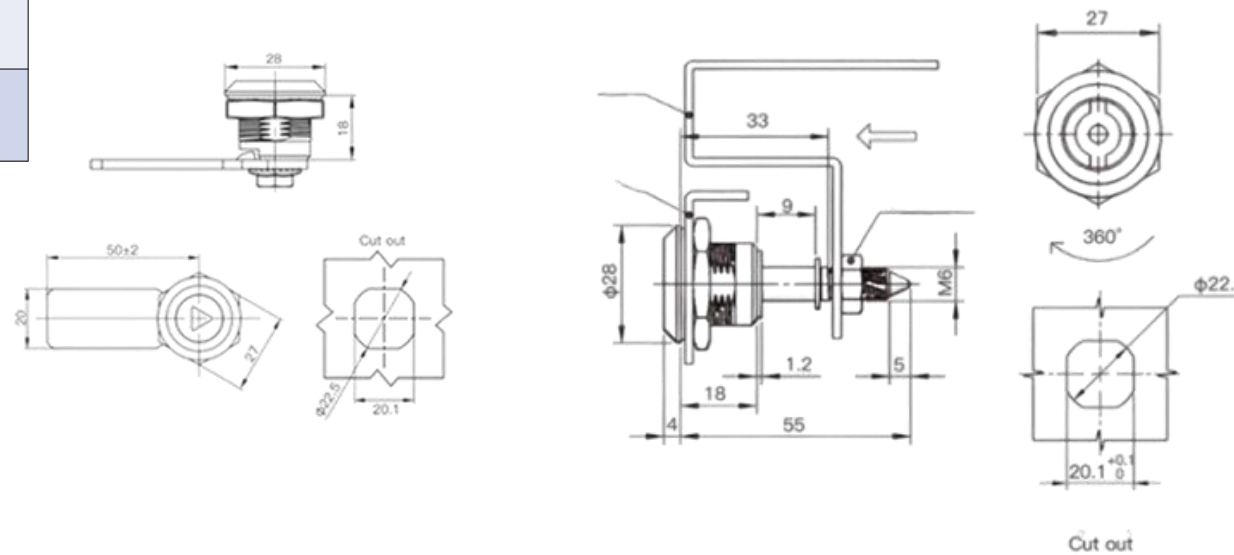
PROJECT	DESCRIPTION
PRODUCT MODEL	PTICPA3018 WING LOCK WITH KEY BLACK PTICPA3019 WING LOCK WITH KEY MATT
MAIN MATERIAL	ZINC ALLOY
SURFACE TREATMENT	BRIGHT CHROMIUM / BLACK

**PTICPA3020  
PTICPA3021**



PROJECT	DESCRIPTION
PRODUCT MODEL	PTICPA3020 SQUARE LOCK SS PTICPA3021 TRIANGULAR LOCK SS
MAIN MATERIAL	304 STAINLESS STEEL
SURFACE TREATMENT	BRUSHED

**PTICPA3022  
PTICPA3023  
PTICPA3024**



PROJECT	DESCRIPTION
PRODUCT MODEL	PTICPA3022 PIN5 LOCK SS PTICPA3023 TRIANGULAR LOCK SS PTICPA3024 TRIANGULAR LOCK SS
MAIN MATERIAL	304 STAINLESS STEEL
SURFACE TREATMENT	BRUSHED

**PTICPA3025**



PROJECT	DESCRIPTION
PRODUCT MODEL	LONG SQUARE LOCK SS
MAIN MATERIAL	304 STAINLESS STEEL
SURFACE TREATMENT	BRUSHED

**PTICPA3026**



PROJECT	DESCRIPTION
PRODUCT MODEL	QUARTER TURN LONG SHAFT PIN5mm LOCK SS
MAIN MATERIAL	304 STAINLESS STEEL
SURFACE TREATMENT	BRUSHED

## Handle Locks:

We manufacture comprehensive range Control Panel accessories handle locks, flappable, key versioned, without key & variant surface finish.

We support customers by developing customized handle locks.



# Handles Locks Overview – Types, Materials & Models

Quick reference for control-panel handles: variants, materials, finishes, and model range.

**Types:** Folded, lift, foldable handles for control panels.

**Materials:** Zinc alloy, stainless steel; ABS and PA for lift handles

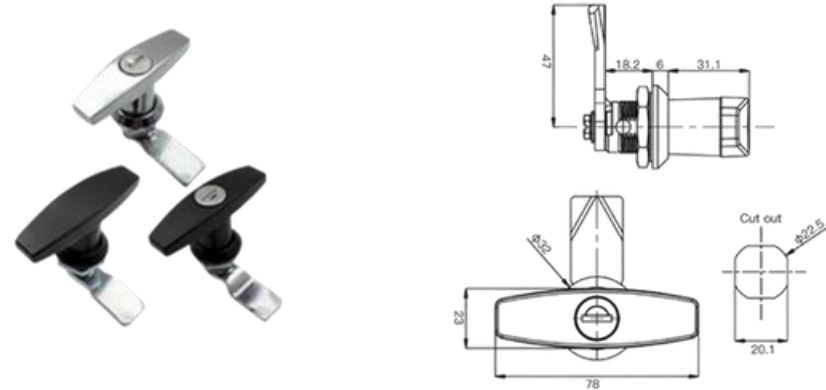
**Surface treatments:** Powder coating, bright chromium, mirror polishing.

**Models:** PTICPA2003 to PTICPA2017 covering multiple sizes and finishes.

**Design focus:** Ergonomic, durable; supports static and dynamic loads.

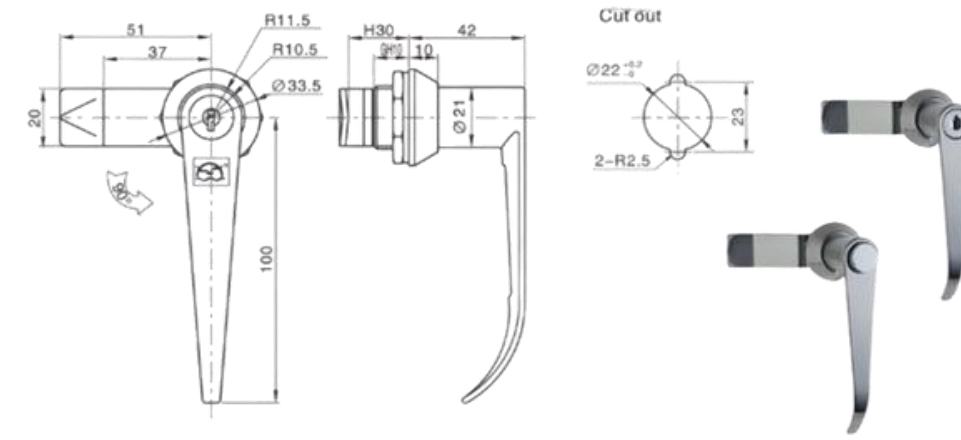


**PTICPA4001**  
**PTICPA4002**  
**PTICPA4003**  
**PTICPA4004**



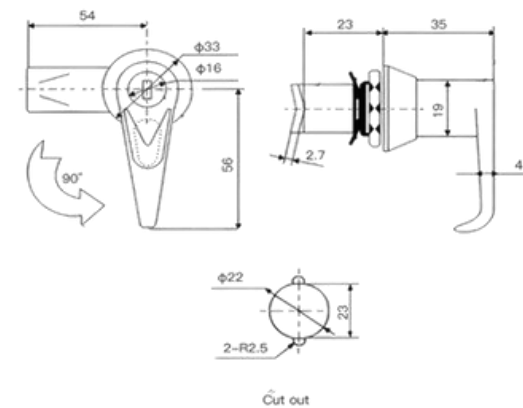
PROJECT	DESCRIPTION
PRODUCT MODEL	PTICPA4001 HANDLE LOCK BRIGHT WITH KEY PTICPA4002 HANDLE LOCK BRIGHT WITHOUT KEY PTICPA4003 HANDLE LOCK BLACK WITH KEY PTICPA4004 HANDLE LOCK BLACK WITHOUT KEY
MAIN MATERIAL	ZINC ALLOY
SURFACE TREATMENT	BLACK / BRIGHT CHROMIUM

**PTICPA4007**  
**PTICPA4008**



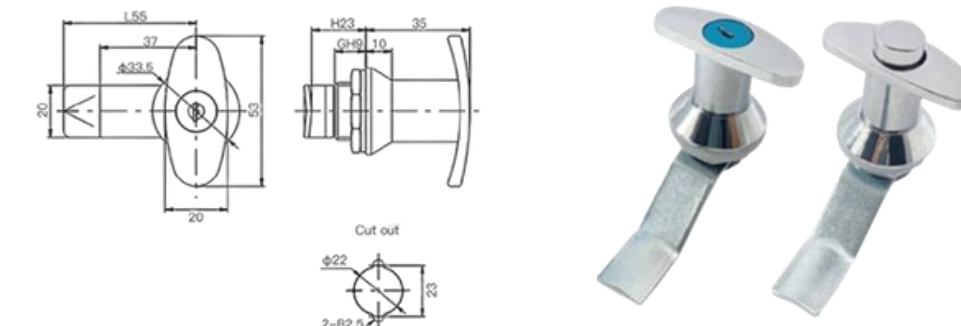
PROJECT	DESCRIPTION
PRODUCT MODEL	PTICPA4007 HANDLE LOCK WITH KEY ZINC ALLOY PTICPA4008 HANDLE LOCK WITH KEY ALUMINIUM ALLOY
MAIN MATERIAL	ZINC ALLOY
SURFACE TREATMENT	BRIGHT CHROMIUM

**PTICPA4005**  
**PTICPA4006**



PROJECT	DESCRIPTION
PRODUCT MODEL	PTICPA4005 HANDLE LOCK ZINC ALLOY PTICPA4006 HANDLE LOCK ALUMINIUM ALLOY
MAIN MATERIAL	ZINC ALLOY / ALUMINIUM ALLOY
SURFACE TREATMENT	BRIGHT CHROMIUM

**PTICPA4009**  
**PTICPA4010**

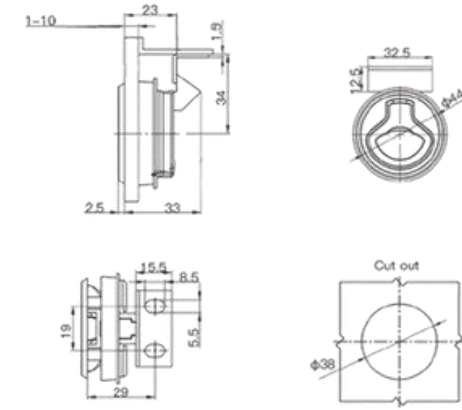
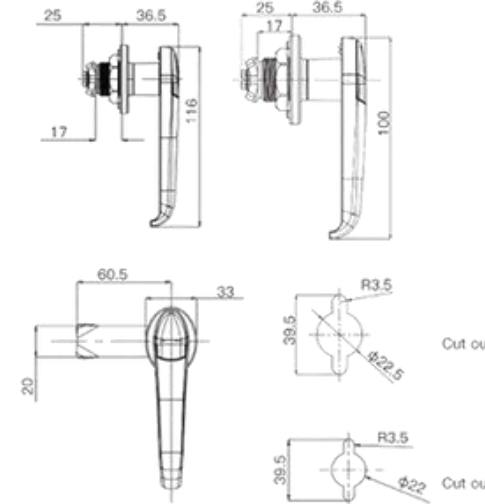


PROJECT	DESCRIPTION
PRODUCT MODEL	PTICPA4009 HANDLE LOCK WITHOUT KEY ZINC ALLOY PTICPA4010 HANDLE LOCK WITH KEY ALUMINIUM ALLOY
MAIN MATERIAL	ZINC ALLOY
SURFACE TREATMENT	BRIGHT CHROMIUM / BLACK

**PTICPA4011  
PTICPA4012**



PROJECT	DESCRIPTION
PRODUCT MODEL	PTICPA4011 FLIP L HANDLE LOCK 116mm PTICPA4012 FLIP L HANDLE LOCK 100mm
MAIN MATERIAL	ZINC ALLOY / ALUMINUM ALLOY
SURFACE TREATMENT	BRIGHT CHROMIUM



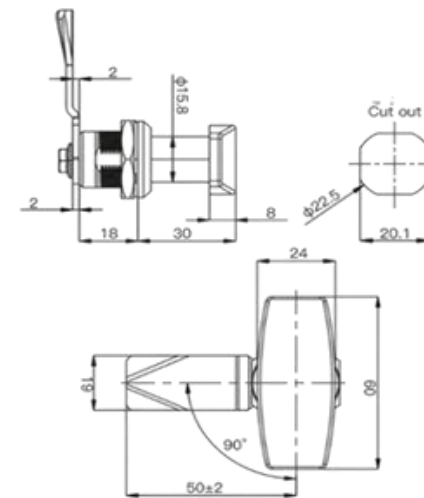
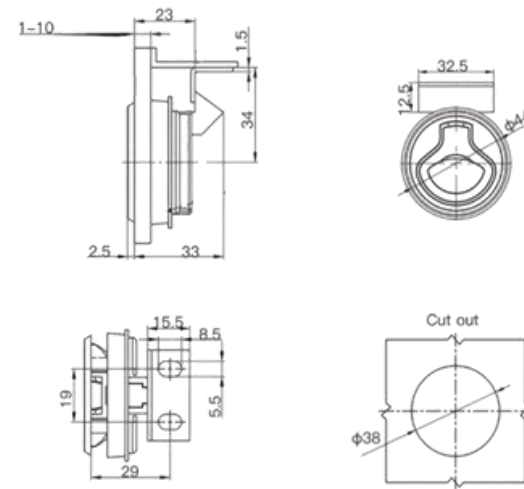
**PTICPA4014**

PROJECT	DESCRIPTION
PRODUCT MODEL	LOCK ZINC ALLOY WITH KEY
MAIN MATERIAL	ZINC ALLOY / PA
SURFACE TREATMENT	BRUSHED

**PTICPA4013**



PROJECT	DESCRIPTION
PRODUCT MODEL	LITTLE LOCK
MAIN MATERIAL	ZINC ALLOY / PA
SURFACE TREATMENT	MULTI COLOR



**PTICPA4015**



PROJECT	DESCRIPTION
PRODUCT MODEL	T HANDLE LOCK SS
MAIN MATERIAL	304 STAINLESS STEEL
SURFACE TREATMENT	BRUSHED

## Press Locks:

We manufacture comprehensive range of Control Panel accessories Press locks, with key, without key versioned & variant surface finish chrome , black etc.

we support customers by developing customized press locks.



# Press Locks Overview – Types, Materials & Models

Quick reference for control-panel handles: variants, materials, finishes, and model range.

**Types:** Folded, lift, foldable handles for control panels

**Materials:** Zinc alloy, stainless steel; ABS and PA for lift handles.

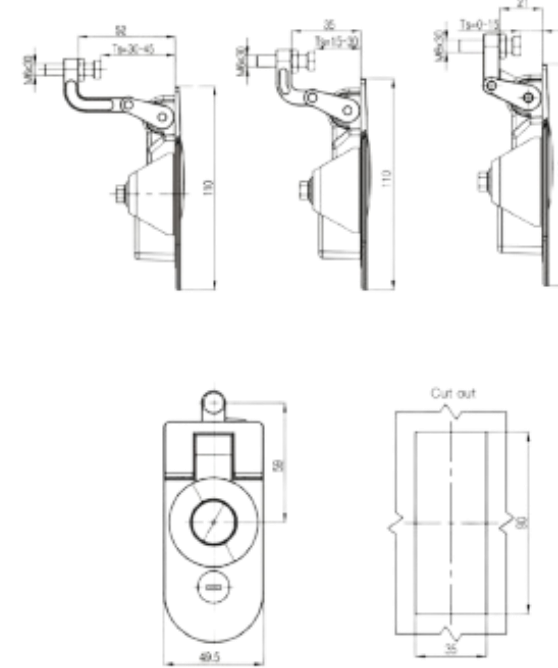
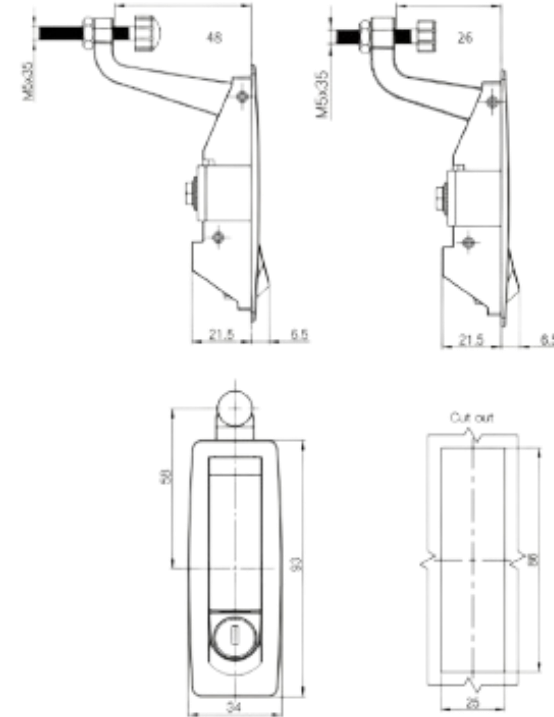
**Surface treatments:** Powder coating, bright chromium, mirror polishing.

**Models:** PTICPA2003 to PTICPA2017 covering multiple sizes and finishes.

**Design focus:** Ergonomic, durable; supports static and dynamic loads.



**PTICPA5001  
PTICPA5002  
PTICPA5003  
PTICPA5004  
PTICPA5005**



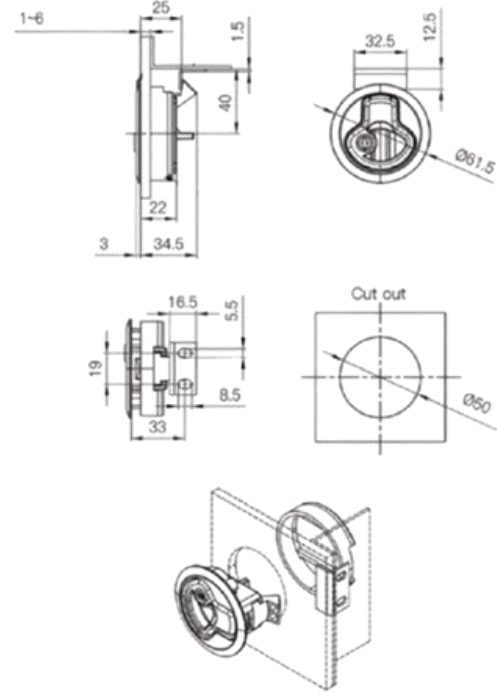
**PTICPA5006  
PTICPA5007  
PTICPA5008  
PTICPA5009**



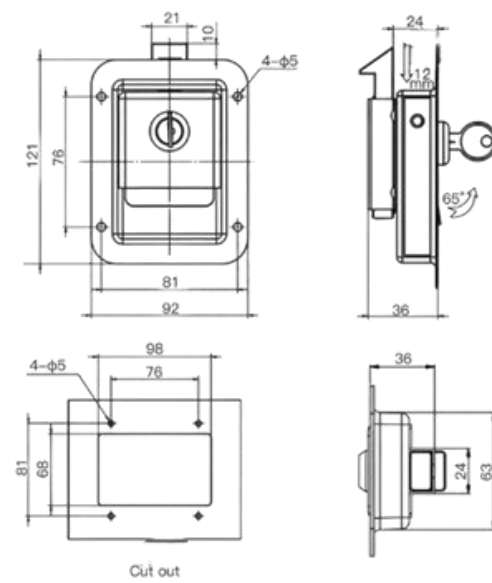
PROJECT	DESCRIPTION
PRODUCT MODEL	PTICPA5001 PRESS LOCK BLACK LONG SUPPORT STRAP WITH KEY PTICPA5002 PRESS LOCK BLACK SHORT BRACKET WITH KEY PTICPA5003 PRESS LOCK BLACK LONG SUPPORT STRAP WITHOUT KEY PTICPA5004 PRESS LOCK BLACK SHORT BRACKET WITHOUT KEY PTICPA5005 PRESS LOCK BUTTON TYPE LOCK
MAIN MATERIAL	LOCK BODY ZINC ALLOY, CARBON STEEL FITTINGS
SURFACE TREATMENT OF LOCK BODY	BLACK CHROMIUM / BLACK
ACCESSARY SURFACE TREATMENT	BLUE WHITE ZINC PLATING WITH COLORED ZINC (SST 48-720 HOURS)
IP RATING	IP 40
HANDLE CARRYING TENSION VALUE	≤1200N
MAXIMUM STATIC LOAD	200N
REMARKS	SUPPORT CUSTOMIZATION

PROJECT	DESCRIPTION
PRODUCT MODEL	PTICPA5006 PRESS LOCK 67MM WITH KEY PTICPA5007 PRESS LOCK 52MM WITH KEY PTICPA5008 PRESS LOCK 35MM WITH KEY PTICPA5009 PRESS LOCK 21MM WITH KEY
MAIN MATERIAL	LOCK BODY ZINC ALLOY, CARBON STEEL FITTINGS
ACCESSARY SURFACE TREATMENT	BLUE WHITE ZINC PLATING WITH COLORED ZINC (SST 48-720 HOURS)
HANDLE CARRYING TENSION VALUE	≤1300N
MAXIMUM STATIC LOAD	290N

PTICPA5010  
PTICPA5011  
PTICPA5012



PROJECT	DESCRIPTION
PRODUCT MODEL	PTICPA5010 PRESS LOCK BLACK PTICPA5011 PRESS LOCK RED PTICPA5012 PRESS LOCK BLUE
MAIN MATERIAL	ZINC ALLOY, NYLON
SURFACE TREATMENT OF LOCK BODY	MULTIPLE COLORS
REMARKS	SUPPORT CUSTOMIZATION



**PTICPA5013**

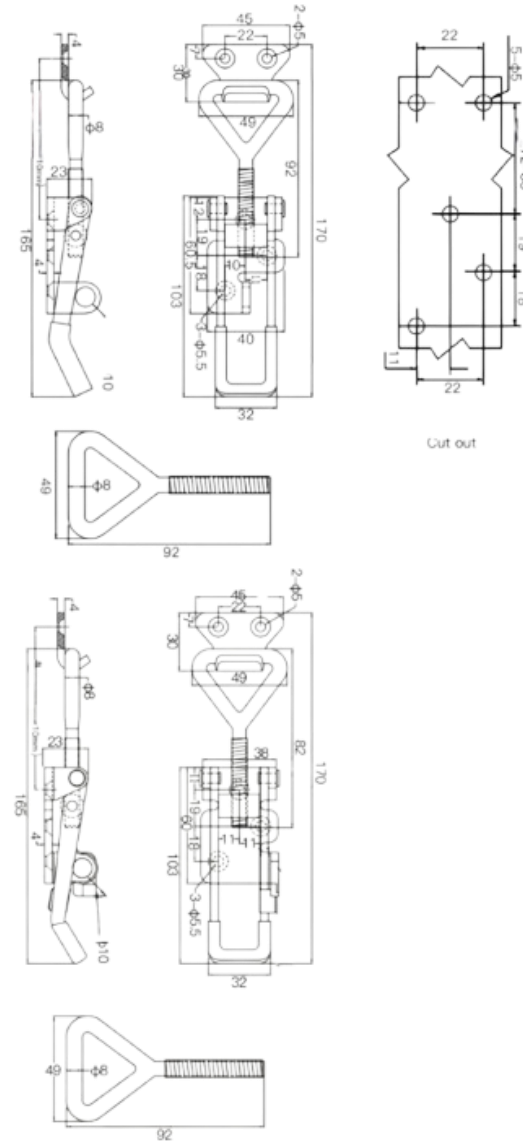
PROJECT	DESCRIPTION
PRODUCT MODEL	SS LOCKS WITH HOLES
MAIN MATERIAL	LOCK BODY CARBON STEEL / STAINLESS STEEL
SURFACE TREATMENT	24-720 HOURS OF SALT SPRAY TESTING



**PTICPA5014**

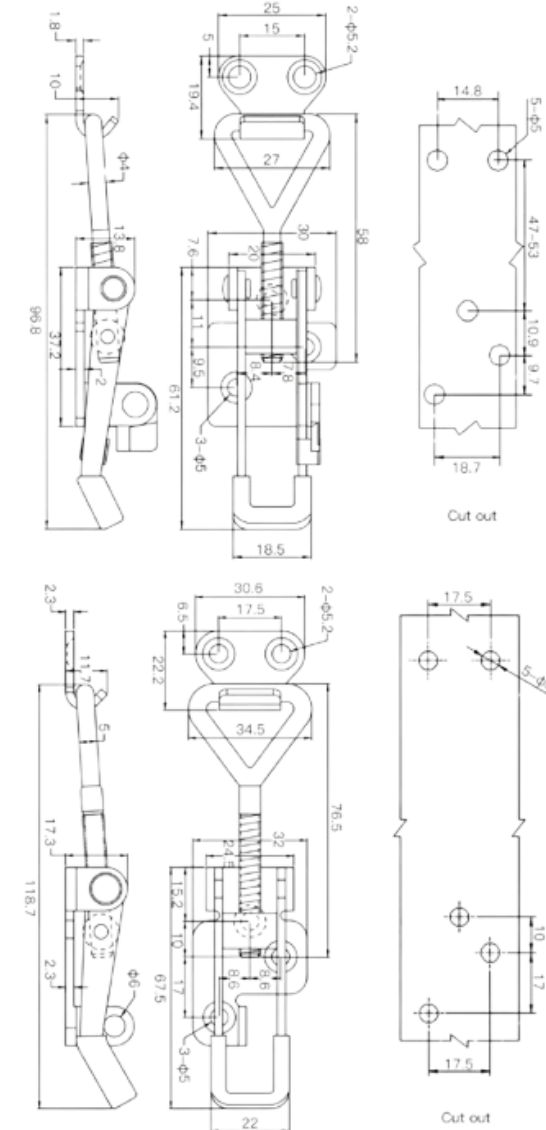
PROJECT	DESCRIPTION
PRODUCT MODEL	SS LOCKS WITHOUT HOLES
MAIN MATERIAL	LOCK BODY CARBON STEEL / STAINLESS STEEL
SURFACE TREATMENT	24-720 HOURS OF SALT SPRAY TESTING

**PTICPA5015**  
**PTICPA5016**



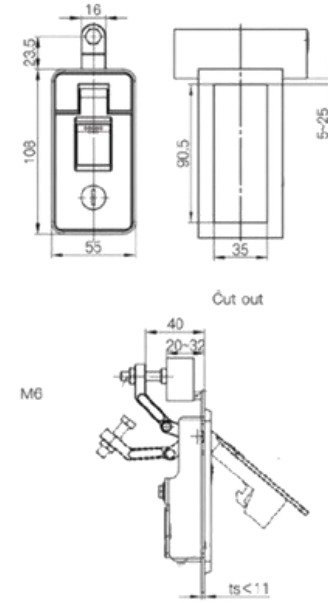
PROJECT	DESCRIPTION
PRODUCT MODEL	STAINLESS STEEL BUCKLE (4mm THICK)
MAIN MATERIAL	304 STAINLESS STEEL
SURFACE TREATMENT	200 HOURS OF SALT SPRAY TESTING

**PTICPA5017**

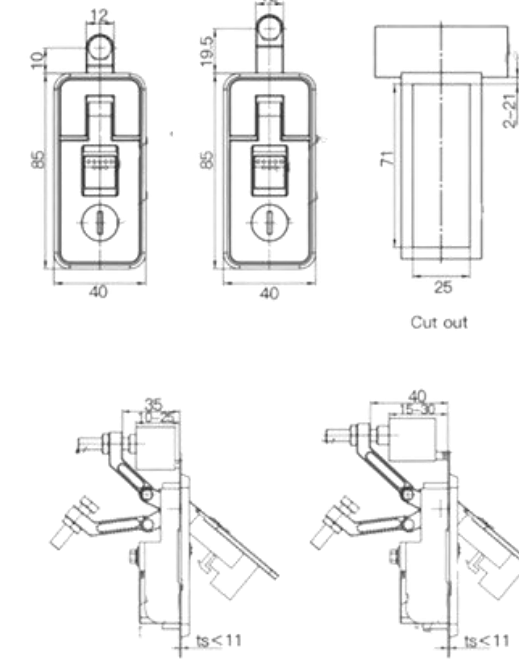


PROJECT	DESCRIPTION
PRODUCT MODEL	SMALL / MEDIUM SIZED BUCKLE
MAIN MATERIAL	304 STAINLESS STEEL
SURFACE TREATMENT	200 HOURS OF SALT SPRAY TESTING

**PTICPA5018  
PTICPA5019**



PROJECT	DESCRIPTION
PRODUCT MODEL	PTICPA5018 PRESS LOCK BLACK WITH KEY PTICPA5019 PRESS LOCK WATER POOF CAP
MAIN MATERIAL	LOCK BODY ZINC ALLOY, CARBON STEEL FITTINGS
SURFACE TREATMENT OF LOCK BODY	BRIGHT CHROMIUM / BLACK
ACCESSARY SURFACE TREATMENT	BLUE WHITE ZINC PLATING WITH COLORED ZINC (SST 48-720 HOURS)
IP RATING	IP 65
HANDLE CARRYING TENSION VALUE	≤1300N
HANDLE LOAD TORQUE VALUE	≤290N.m

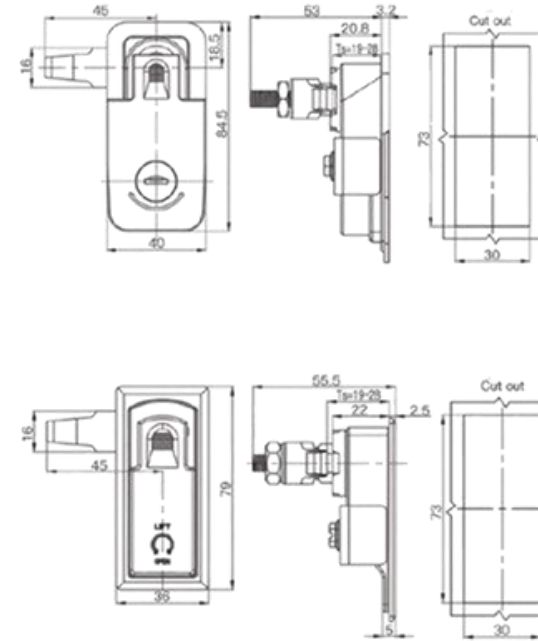


**PTICPA5020  
PTICPA5021  
PTICPA5022**

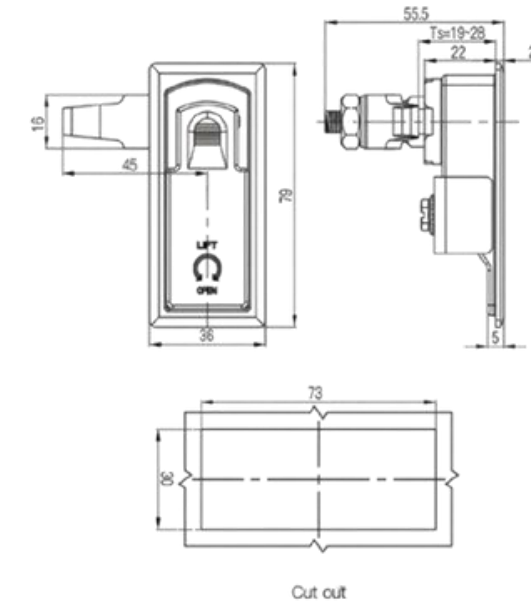


PROJECT	DESCRIPTION
PRODUCT MODEL	PTICPA5020 PRESS LOCK BLACK WITH KEY PTICPA5021 PRESS LOCK GREY WITH KEY PTICPA5022 WATERPROOF CAP
MAIN MATERIAL	LOCK BODY ZINC ALLOY, CARBON STEEL FITTINGS
SURFACE TREATMENT OF LOCK BODY	BRIGHT CHROMIUM / BLACK
ACCESSARY SURFACE TREATMENT	BLUE WHITE ZINC PLATING WITH COLORED ZINC (SST 48-720 HOURS)
IP RATING	IP 65
HANDLE CARRYING TENSION VALUE	≤1300N
HANDLE LOAD TORQUE VALUE	≤290N.m

PTICPA5023  
PTICPA5024  
PTICPA5025



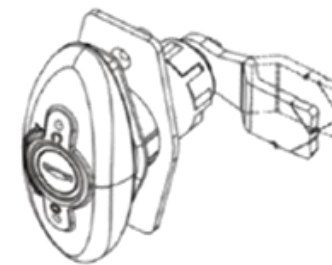
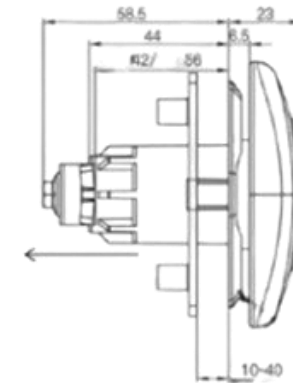
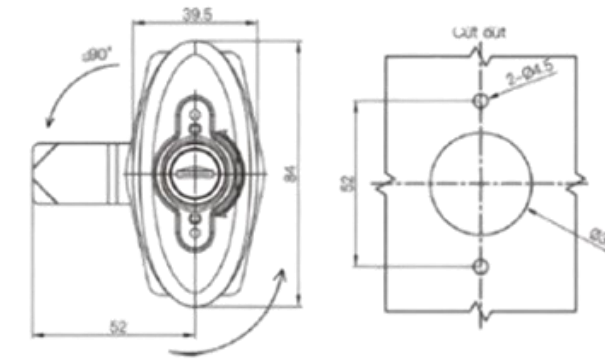
PTICPA5026



PROJECT	DESCRIPTION
PRODUCT MODEL	PTICPA5023 PRESS LOCK BRIGHT WITH ALLOY PTICPA5024 PRESS LOCK BLACK WITH KEY PTICPA5025 PRESS LOCK BLACK WITHOUT KEY
MAIN MATERIAL	LOCK BODY ZINC ALLOY, CARBON STEEL FITTINGS
SURFACE TREATMENT OF LOCK BODY	BLACK / BRIGHT CHROMIUM
ACCESSARY SURFACE TREATMENT	BLUE WHITE ZINC PLATING WITH COLORED ZINC (SST 48-720 HOURS)
HANDLE CARRYING TENSION VALUE	≤420N
MAXIMUM STATIC LOAD	400N
REMARKS	SUPPORT CUSTOMIZATION

PROJECT	DESCRIPTION
PRODUCT MODEL	PRESS LOCK
MAIN MATERIAL	LOCK BODY ZINC ALLOY, CARBON STEEL FITTINGS
SURFACE TREATMENT OF LOCK BODY	BLACK
ACCESSARY SURFACE TREATMENT	BLUE WHITE ZINC PLATING WITH COLORED ZINC (SST 48-720 HOURS)
HANDLE CARRYING TENSION VALUE	≤420N
MAXIMUM STATIC LOAD	400N
REMARKS	SUPPORT CUSTOMIZATION

PTICPA5027



PROJECT	DESCRIPTION
PRODUCT MODEL	DOOR LOCK
MAIN MATERIAL	PA/CARBON STEEL
SURFACE TREATMENT	72-720 HOURS OF SALT SPRAY TESTING

## Swing Locks:

We manufacture comprehensive range of Control Panel accessories swing locks in variant surface finish chromium black.

we support customers by developing customized swing locks.



# Swing Locks Overview – Types, Materials & Models

Quick reference for control-panel handles: variants, materials, finishes, and model range.

**Types:** Folded, lift, foldable handles for control panels

**Materials:** Zinc alloy, stainless steel; ABS and PA for lift handles.

**Surface treatments:** Powder coating, bright chromium, mirror polishing.

**Models:** PTICPA2003 to PTICPA2017 covering multiple sizes and finishes.

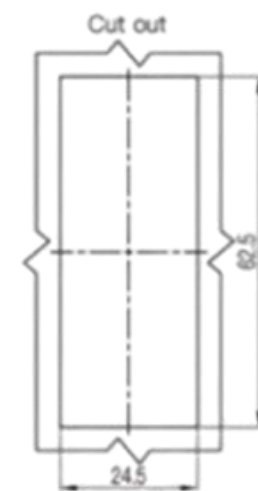
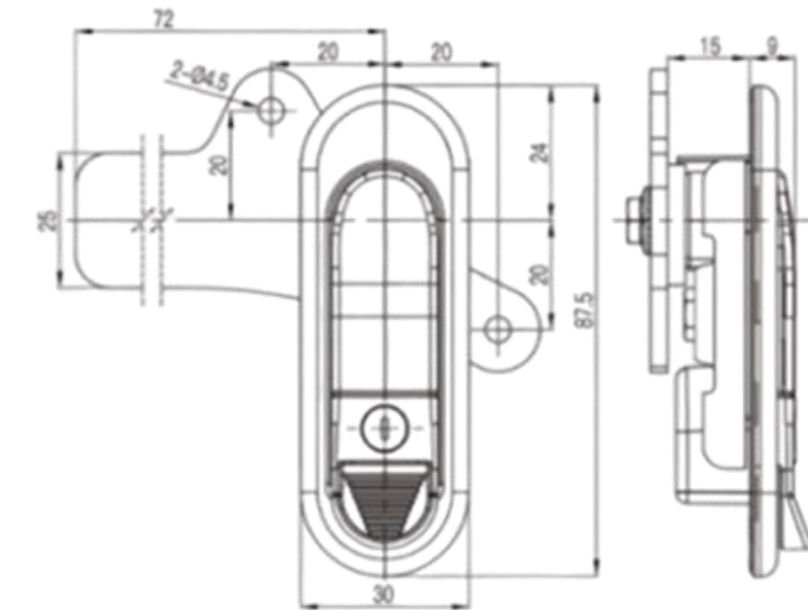
**Design focus:** Ergonomic, durable; supports static and dynamic loads.



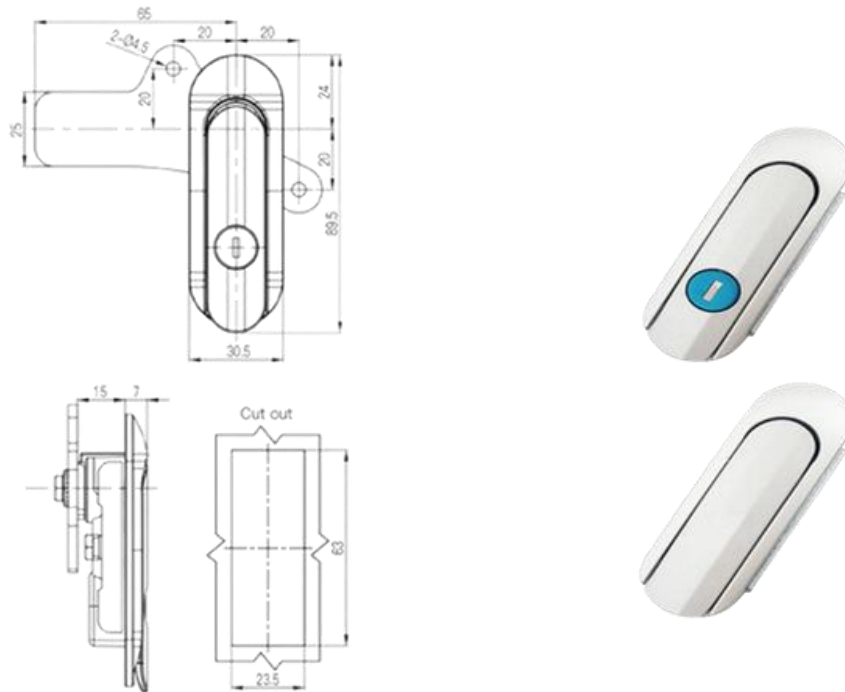
**PTICPA6001**  
**PTICPA6002**



PROJECT	DESCRIPTION
PRODUCT MODEL	PTICPA6001 SWING LOCK ELECTROPLATED MATT FINISH WITH KEY PTICPA6002 SWING LOCK ELECTROPLATED MATT FINISH WITH KEY
MAIN MATERIAL	LOCK BODY ZINC ALLOY, CARBON STEEL FITTINGS
SURFACE TREATMENT OF LOCK BODY	MATTE/GREY CHROME PLATING
ACCESSARY SURFACE TREATMENT	BLUE WHITE ZINC PLATING WITH COLORED ZINC (SST 48-720 HOURS)
IP RATING	IP 54
HANDLE CARRYING TENSION VALUE	<250N
HANDLE LOAD TORQUE VALUE	<14N.m
REMARKS	SUPPORT CUSTOMIZATION

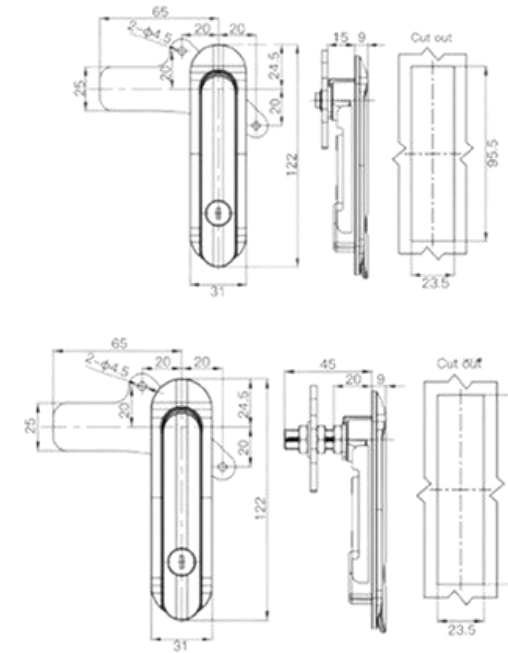


PTICPA6003  
PTICPA6004  
PTICPA6005  
PTICPA6006  
PTICPA6007



PROJECT	DESCRIPTION
PRODUCT MODEL	PTICPA6003 SWING LOCK ELECTROPLATED MATT FINISH PTICPA6004 SWING LOCK ZINC ALLOY PTICPA6005 SWING LOCK ZINC ALLOY PTICPA6006 SWING LOCK ELECTROPLATED MATT FINISH PTICPA6007 SWING LOCK ZINC ALLOY
MAIN MATERIAL	LOCK BODY ZINC ALLOY, ALUMINIUM ALLOY , ABS , CARBON STEEL FITTINGS
SURFACE TREATMENT OF LOCK BODY	MATTE / GREY CHROME PLATING
ACCESSARY SURFACE TREATMENT	BLUE WHITE ZINC PLATING WITH COLORED ZINC (SST 48-720 HOURS)
IP RATING	IP 54
HANDLE CARRYING TENSION VALUE	≤220N
HANDLE LOAD TORQUE VALUE	≤15N.m
REMARKS	SUPPORT CUSTOMIZATION

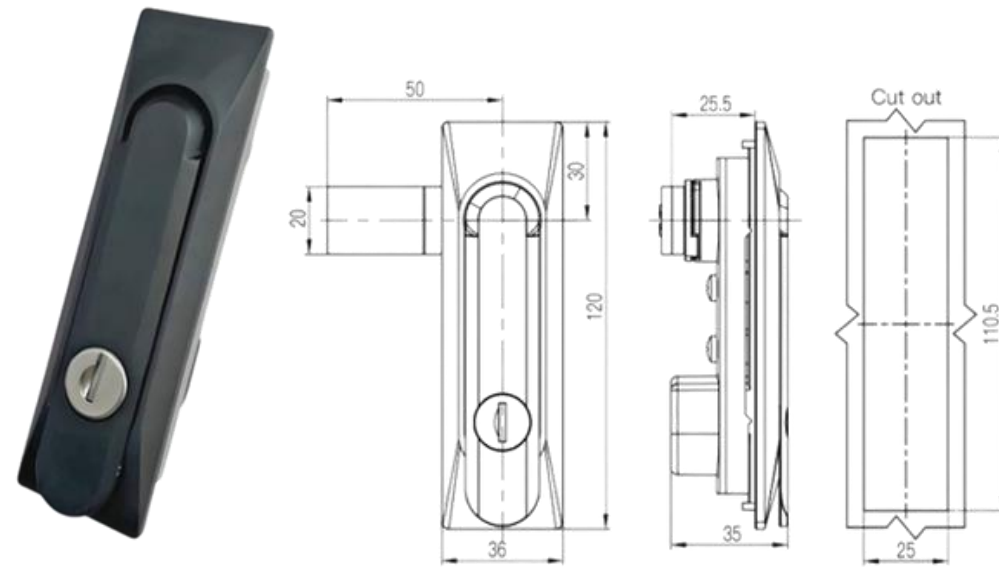
PTICPA6008  
PTICPA6009  
PTICPA6010



PROJECT	DESCRIPTION
PRODUCT MODEL	PTICPA6008 SWING LOCK ELECTROPLATED MATT FINISH PTICPA6009 SWING LOCK ZINC ALLOY PTICPA6010 SWING LOCK HALF ZINC ALLOY & HALF ALUMINUM
MAIN MATERIAL	LOCK BODY ZINC ALLOY, CARBON STEEL FITTINGS
SURFACE TREATMENT OF LOCK BODY	MATTE / GREY CHROME PLATING
ACCESSARY SURFACE TREATMENT	BLUE WHITE ZINC PLATING WITH COLORED ZINC (SST 48-720 HOURS)
IP RATING	IP 54
HANDLE CARRYING TENSION VALUE	≤220N
HANDLE LOAD TORQUE VALUE	≤15N.m
REMARKS	SUPPORT CUSTOMIZATION

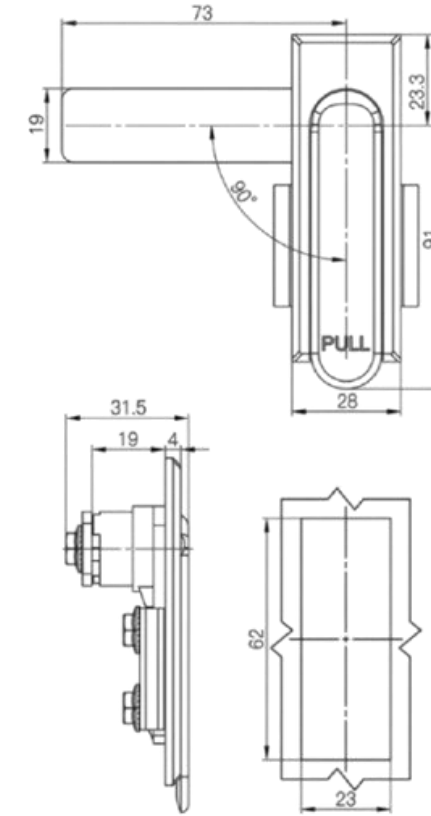


### PTICPA6011



PROJECT	DESCRIPTION
PRODUCT MODEL	SWING LOCK WITH KEY
MAIN MATERIAL	LOCK BODY ZINC ALLOY, CARBON STEEL FITTINGS
SURFACE TREATMENT OF LOCK BODY	BLACK
ACCESSARY SURFACE TREATMENT	BLUE WHITE ZINC PLATING WITH COLORED ZINC (SST 48-720 HOURS)
IP RATING	IP 54
HANDLE CARRYING TENSION VALUE	≤350N
HANDLE LOAD TORQUE VALUE	≤25N.m
REMARKS	SUPPORT CUSTOMIZATION

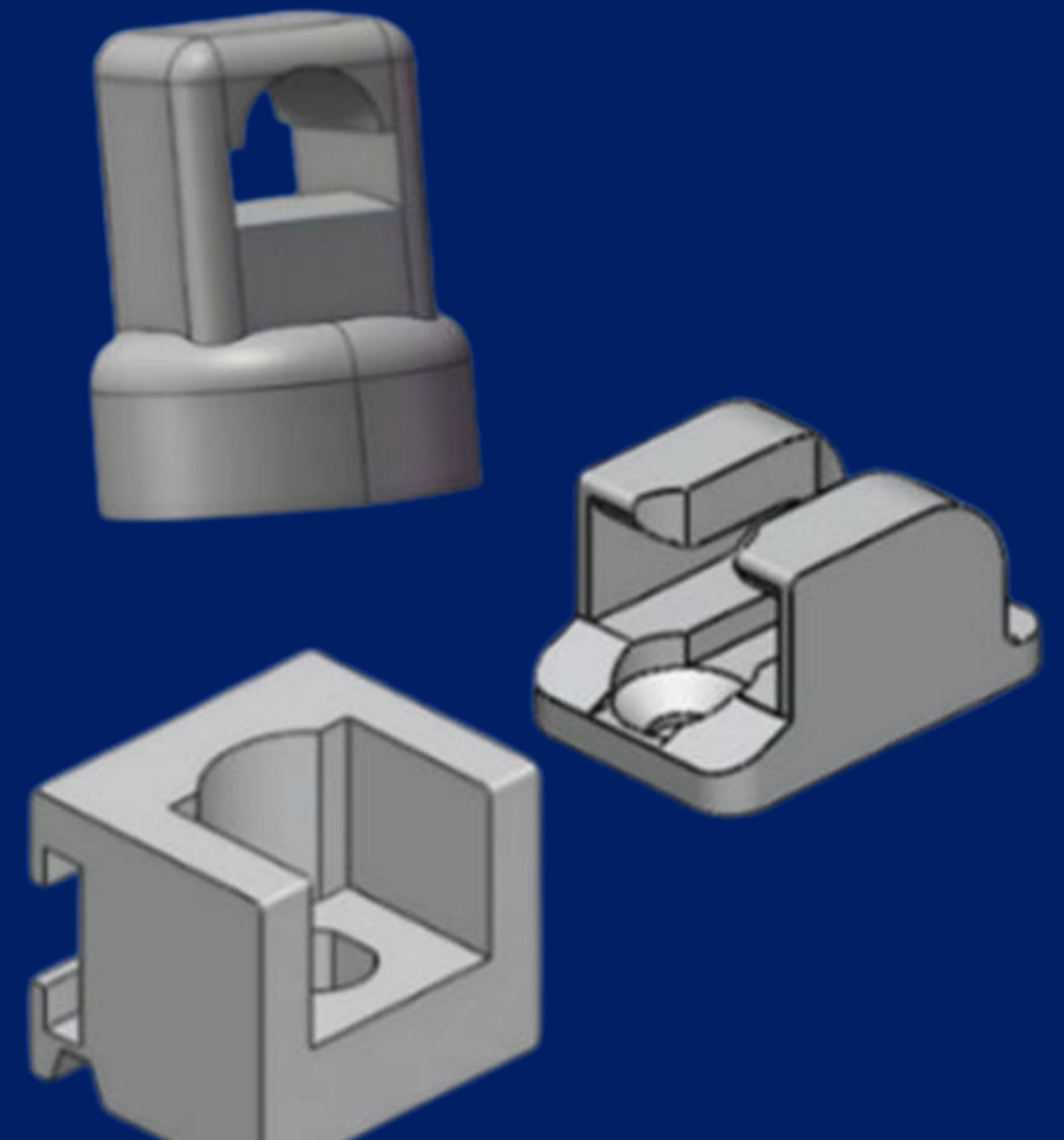
### PTICPA6012 PTICPA6013



PROJECT	DESCRIPTION
PRODUCT MODEL	PTICPA6012 SWING LOCK ALUMINUM ALLOY PTICPA6013 SWING LOCK MATT
MAIN MATERIAL	LOCK BODY ZINC ALLOY, CARBON STEEL FITTINGS
SURFACE TREATMENT OF LOCK BODY	MATTE / BLACK
ACCESSARY SURFACE TREATMENT	BLUE WHITE ZINC PLATING WITH COLORED ZINC (SST 24 HOURS)
REMARKS	SUPPORT CUSTOMIZATION

## CPA Support Accessories:

We manufacture comprehensive range of Control Panel accessories, supporting accessories according application requirement for seamless smooth functional fitment in the control systems, also we support customers by developing customized accessories for control panel.



# Accessories Overview: Durable Guides & Buckles

Materials, surface treatments, designs and function for panel assembly.

**Rod guides** in multiple designs (step, slot, rounded) for precise assembly; mainly **black PA**.

**Buckles** and fasteners made from **stainless steel** for robust fastening.

Additional parts in **zinc alloy, PA**, and **stainless steel**.

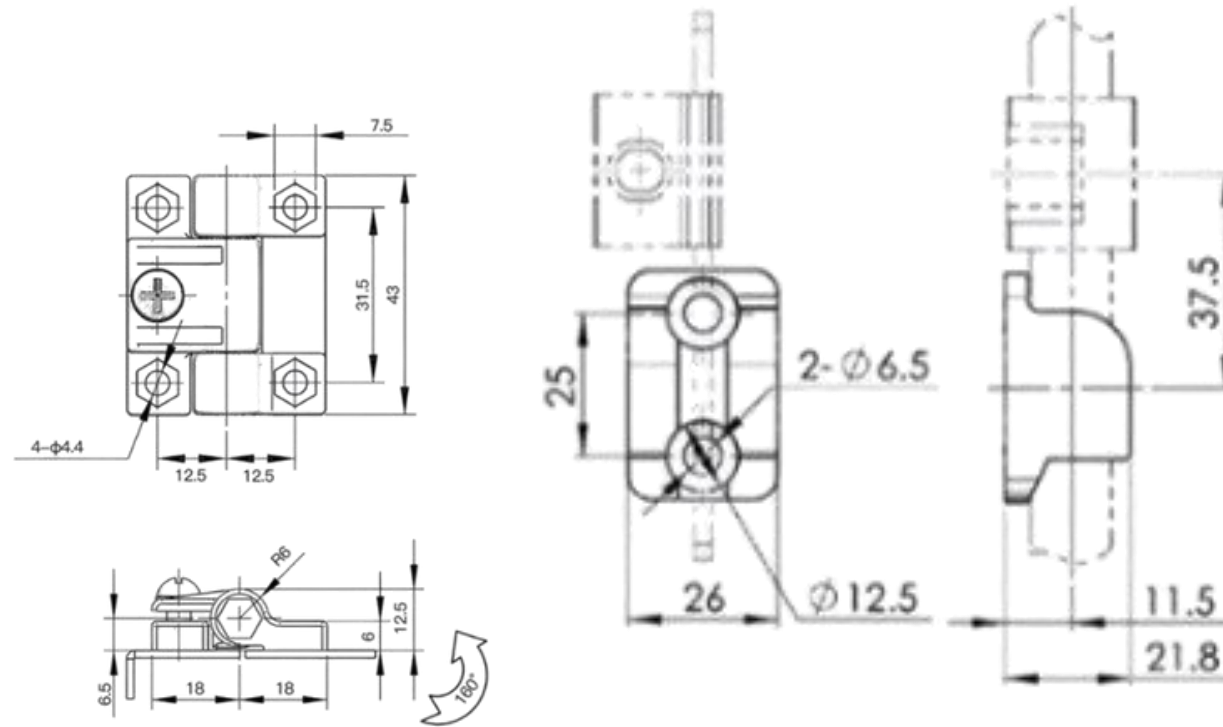
**Surface treatments:** zinc blue plating; salt spray tested up to **200 hours** for corrosion resistance.

Functional purpose: improve assembly precision, secure fastening, and ensure long-term durability.

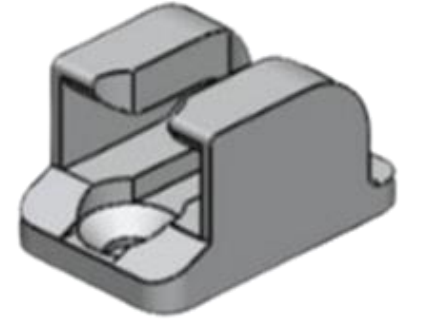
### PTICPA7001



PROJECT	DESCRIPTION
PRODUCT MODEL	STRENGTH NUT
MAIN MATERIAL	CARBON STEEL
SURFACE TREATMENT	BLUE-WHITE ZINC PLATING



### PTICPA7003

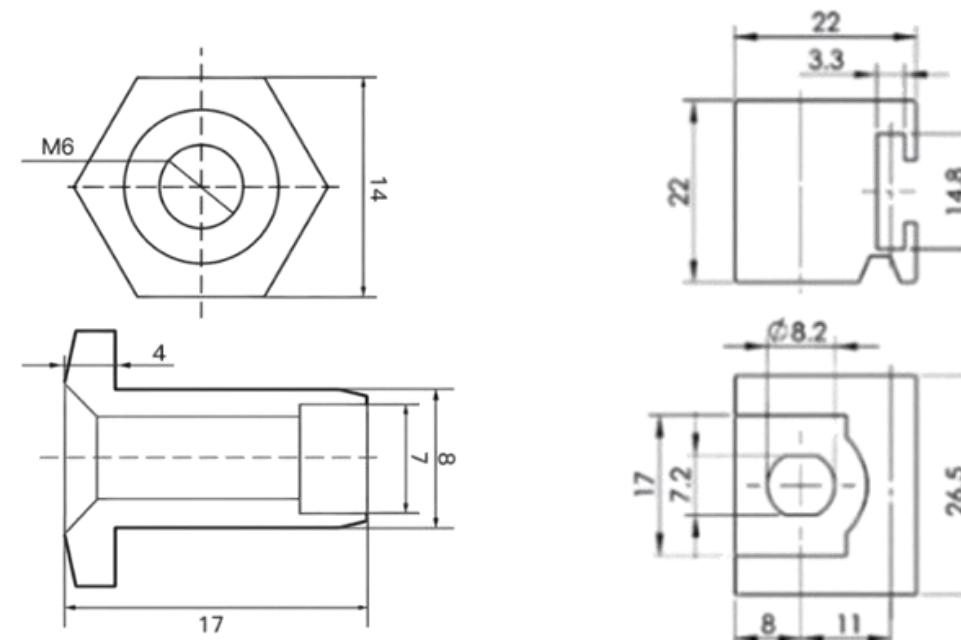


PROJECT	DESCRIPTION
PRODUCT MODEL	ROD GUIDE ZINC ALLOY
MAIN MATERIAL	ZINC ALLOY
SURFACE TREATMENT	ZINC BLUE PLATED

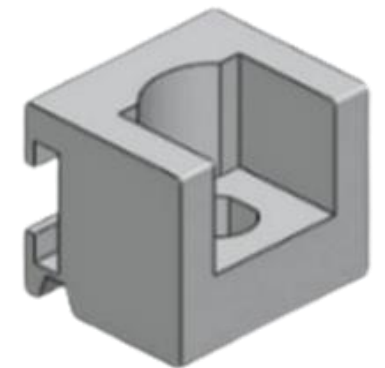
### PTICPA7002



PROJECT	DESCRIPTION
PRODUCT MODEL	HINGE PA BLACK
MAIN MATERIAL	PA
SURFACE TREATMENT	BLACK

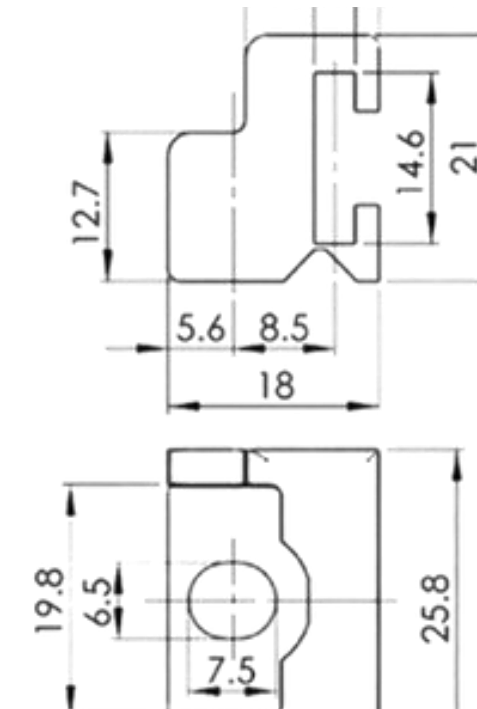
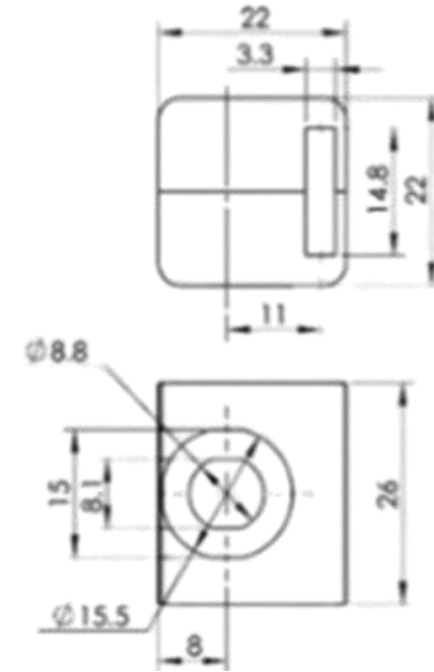
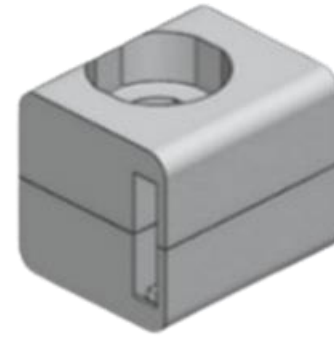


### PTICPA7004



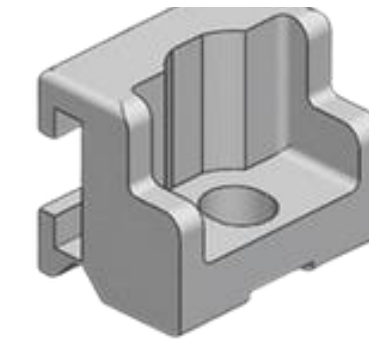
PROJECT	DESCRIPTION
PRODUCT MODEL	ROD GUIDE PA
MAIN MATERIAL	PA
SURFACE	BLACK

**PTICPA7005**



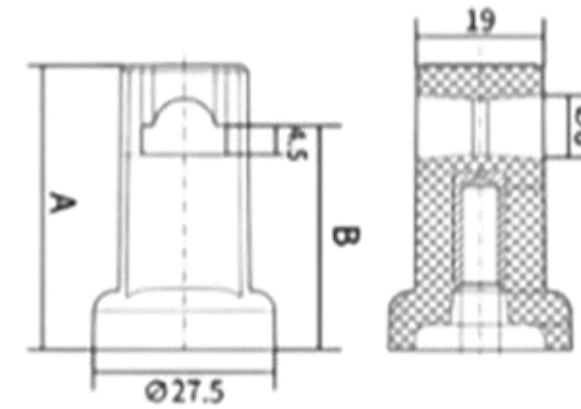
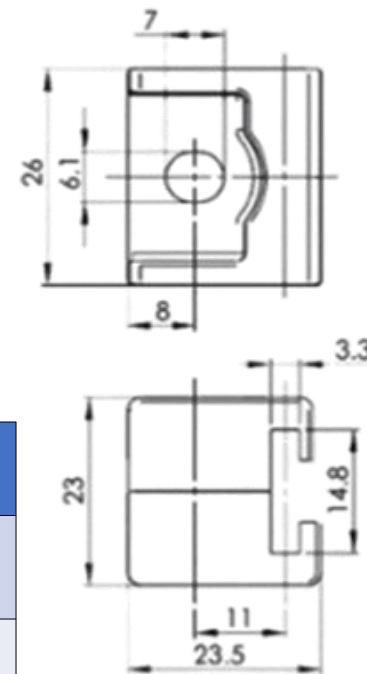
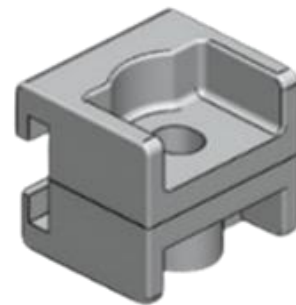
PROJECT	DESCRIPTION
PRODUCT MODEL	CLOSED ROD GUIDE PA
MAIN MATERIAL	PA
SURFACE	BLACK

**PTICPA7007**



PROJECT	DESCRIPTION
PRODUCT MODEL	ROD GUIDE PA WITH STEP
MAIN MATERIAL	PA
SURFACE	BLACK

**PTICPA7006**



A	B	
32	24	M6 × 16
38	30	M6 × 20
42	34	M6 × 20

PROJECT	DESCRIPTION
PRODUCT MODEL	ROD GUIDE WITH PA WITH SLOT
MAIN MATERIAL	PA
SURFACE	BLACK

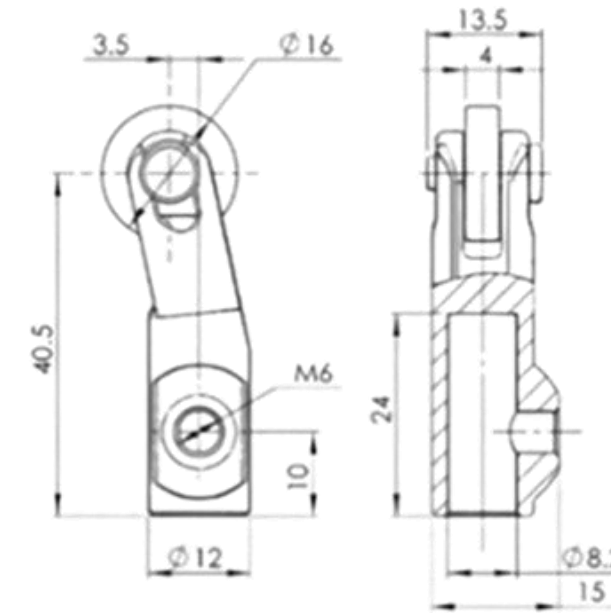
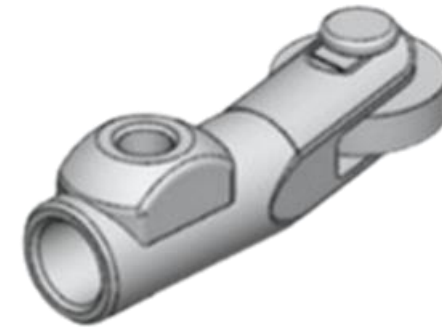
**PTICPA7008**



PROJECT	DESCRIPTION
PRODUCT MODEL	ROD GUIDE ROUNDED
MAIN MATERIAL	PA
SURFACE	BLACK

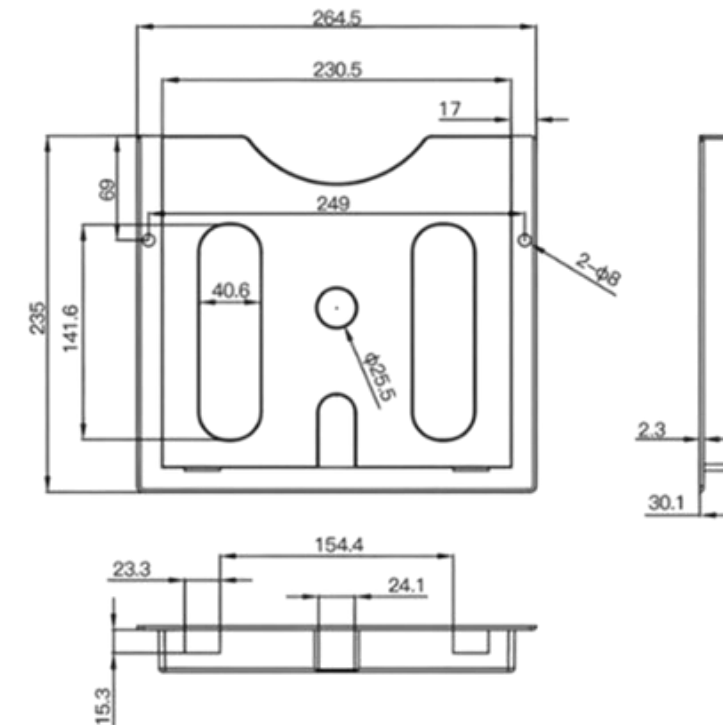
**PTICPA7009**

PROJECT	DESCRIPTION
PRODUCT MODEL	ROUND ROD END CAP WITH ROLLER
MAIN MATERIAL	ZINC ALLOY
SURFACE TREATMENT	ZINC BLUE PLATED



**PTICPA7010**  
**PTICPA7011**

PROJECT	DESCRIPTION
PRODUCT MODEL	PTICPA7010 DOC. HOLDER ORANGE PTICPA7011 DOC. HOLDER WHITE
MAIN MATERIAL	PA
SURFACE	ORANGE / WHITE



## Latch Locks:

We manufacture comprehensive range of Control Panel accessories latch locks like rod length variation, multipoint locking system & variant surface finish in different material like Zinc die, SS316 materials, also we support customers by developing customized panel latch locks.



# Latch Locks Overview – Types, Materials & Models

Quick reference for control-panel latch locks: variants, materials, finishes, and model range.

**Types:** Latch locks with / without holes, slide protective cap, with key, without key , with flappable cap latch locks for control panels

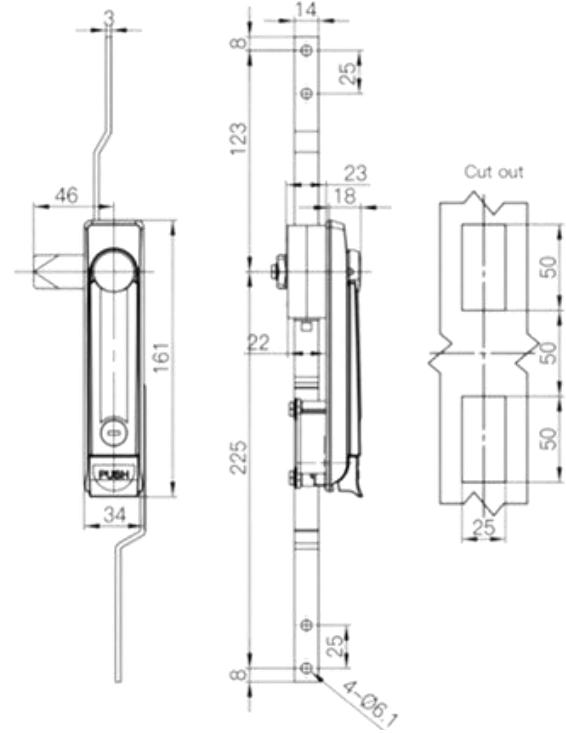
**Materials:** Zinc alloy, stainless steel; ABS and PA for latch locks.

**Surface treatments:** Satin polish, bright chromium, mirror polishing, black

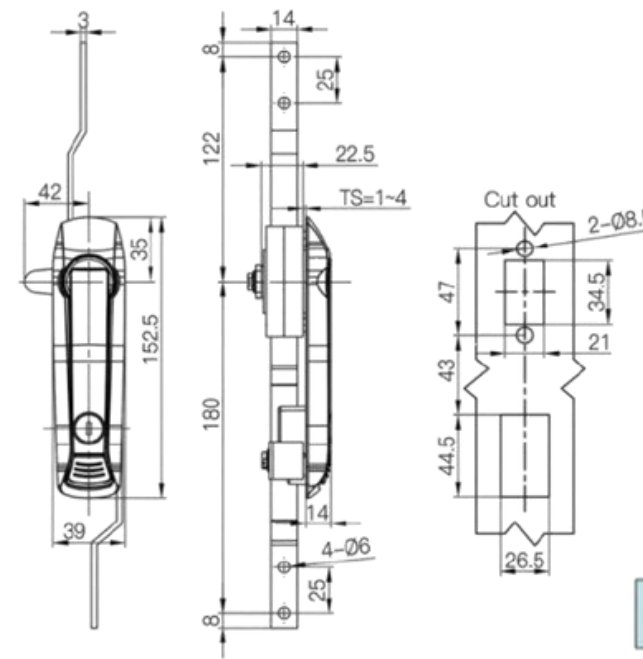
**Models:** PTICPA8001 to PTICPA8009 covering multiple sizes and finishes.

**Design focus:** Ergonomic, durable; supports static and dynamic loads.

**PTICPA8001**



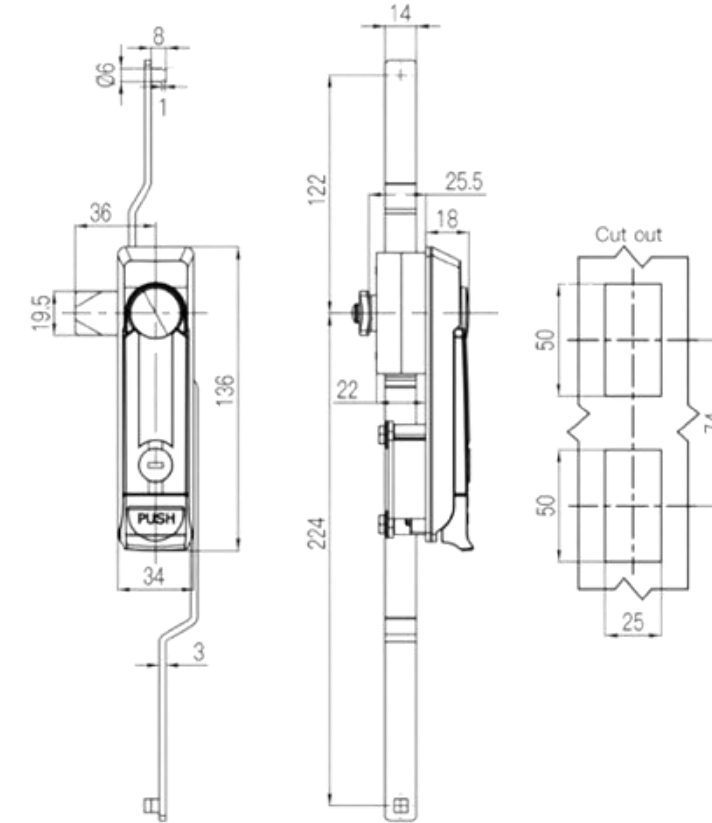
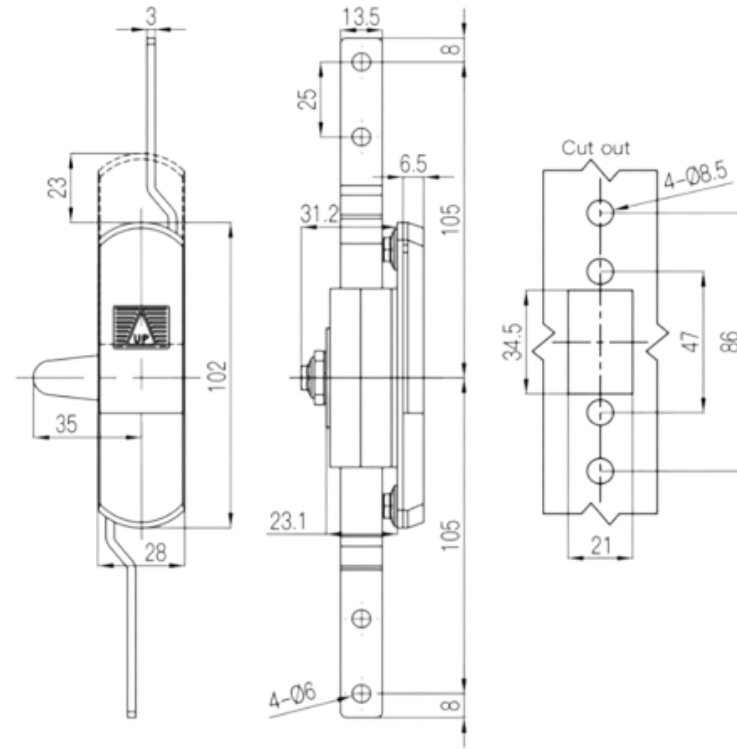
**PTICPA8002  
PTICPA8003**



PROJECT	DESCRIPTION
PRODUCT MODEL	ROD LATCH LOCK WITH / WITHOUT HOLE
MAIN MATERIAL	LOCK BODY ZINC ALLOY, CARBON STEEL FITTINGS
SURFACE TREATMENT OF LOCK BODY	BLACK
ACCESSARY SURFACE TREATMENT	BLUE WHITE ZINC PLATING WITH COLORED ZINC (SST 48-720 HOURS)
IP RATING	IP 54
HANDLE CARRYING TENSION VALUE	≤295N
HANDLE LOAD TORQUE VALUE	≤25N.m
REMARKS	SUPPORT CUSTOMIZATION

PROJECT	DESCRIPTION
PRODUCT MODEL	PTICPA8002 ROD LATCH LOCK BLACK PTICPA8003 ROD LATCH LOCK MATT
MAIN MATERIAL	LOCK BODY ZINC ALLOY, CARBON STEEL FITTINGS
SURFACE TREATMENT OF LOCK BODY	MATTE / BLACK
ACCESSARY SURFACE TREATMENT	BLUE WHITE ZINC PLATING WITH COLORED ZINC (SST 48-720 HOURS)
IP RATING	IP 65
HANDLE CARRYING TENSION VALUE	≤250N
HANDLE LOAD TORQUE VALUE	≤30N.m
REMARKS	SUPPORT CUSTOMIZATION

### PTICPA8004



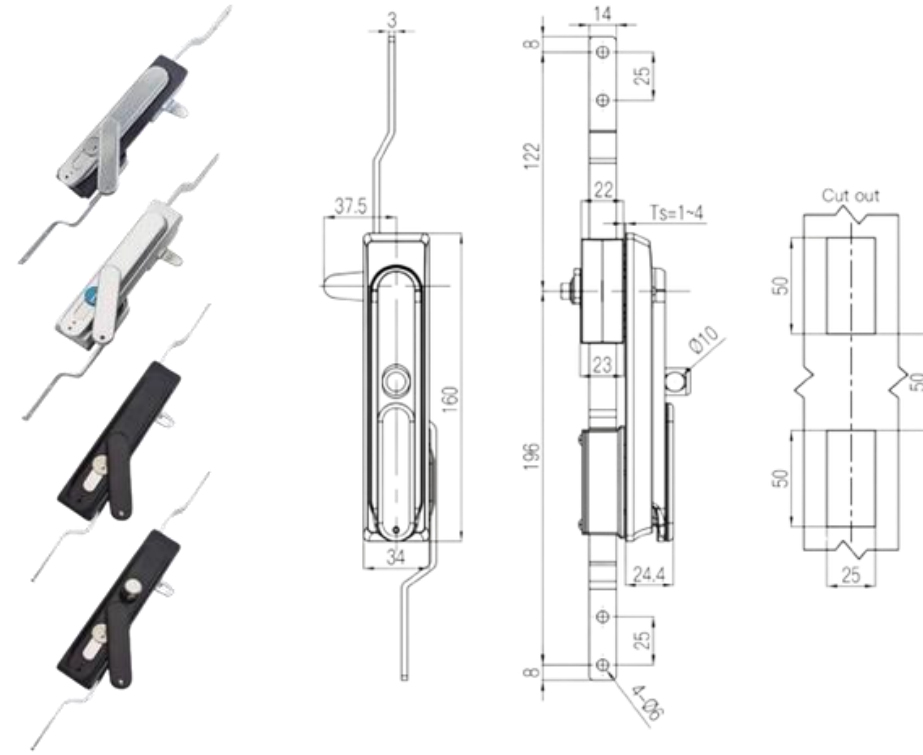
### PTICPA8005



PROJECT	DESCRIPTION
PRODUCT MODEL	LATCH LOCK SLIDE PROTECTIVE CAP WITH FLAT ROD
MAIN MATERIAL	LOCK BODY ZINC ALLOY, CARBON STEEL FITTINGS
SURFACE TREATMENT OF LOCK BODY	MATTE / BLACK
ACCESSARY SURFACE TREATMENT	BLUE WHITE ZINC PLATING WITH COLORED ZINC (SST 48-720 HOURS)
IP RATING	IP 40
HANDLE LOAD TORQUE VALUE	≤9N.m
REMARKS	SUPPORT CUSTOMIZATION

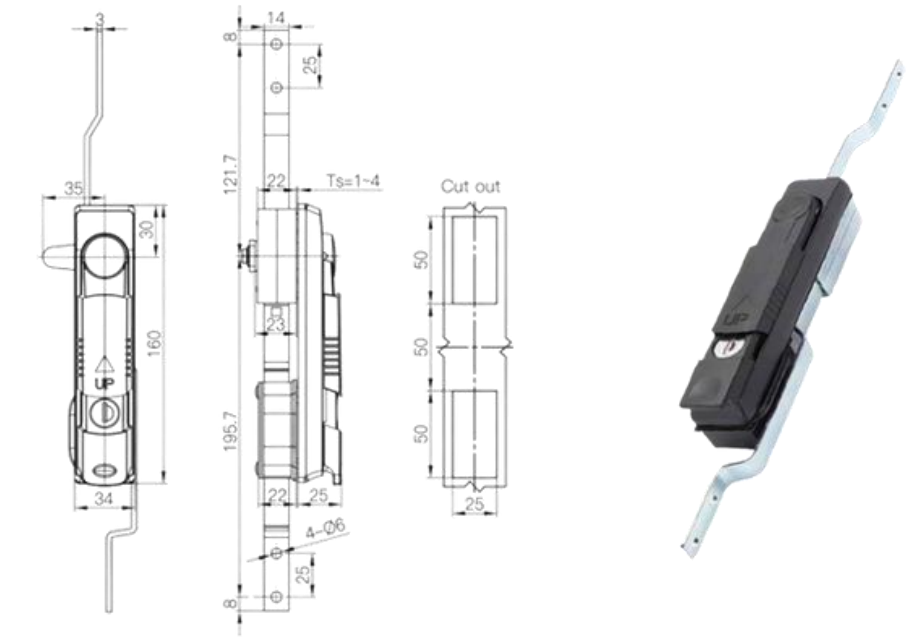
PROJECT	DESCRIPTION
PRODUCT MODEL	LATCH LOCK WITH KEY
MAIN MATERIAL	LOCK BODY ZINC ALLOY, CARBON STEEL FITTINGS
SURFACE TREATMENT OF LOCK BODY	BLACK
ACCESSARY SURFACE TREATMENT	BLUE WHITE ZINC PLATING WITH COLORED ZINC (SST 48-720 HOURS)
IP RATING	IP 54
HANDLE CARRYING TENSION VALUE	≤295N
HANDLE LOAD TORQUE VALUE	≤25N.m
REMARKS	SUPPORT CUSTOMIZATION

### PTICPA8006



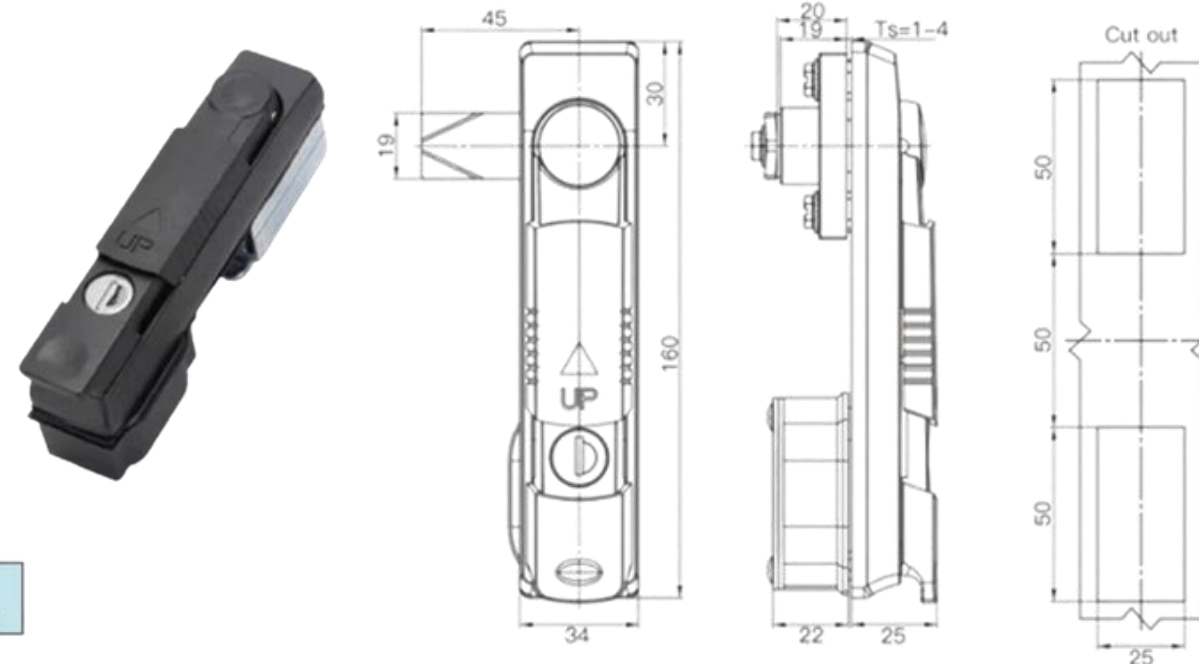
PROJECT	DESCRIPTION
PRODUCT MODEL	LATCH LOCK WITH FLIP & FLAT ROD
MAIN MATERIAL	LOCK BODY ZINC ALLOY, CARBON STEEL FITTINGS
SURFACE TREATMENT OF LOCK BODY	BLACK / MATTE / BRIGHT CHROMIUM / GREY CHROME PLATING
ACCESSARY SURFACE TREATMENT	BLUE WHITE ZINC PLATING WITH COLORED ZINC (SST 48-720 HOURS)
IP RATING	IP 65
HANDLE CARRYING TENSION VALUE	≤400N
HANDLE LOAD TORQUE VALUE	≤35N.m
REMARKS	SUPPORT CUSTOMIZATION

### PTICPA8007



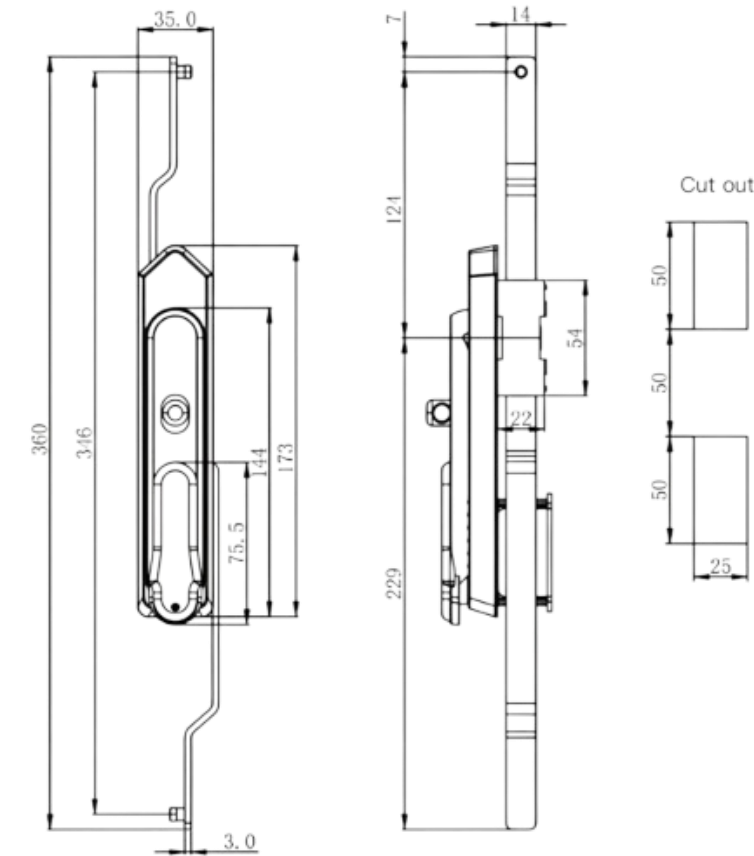
PROJECT	DESCRIPTION
PRODUCT MODEL	LATCH LOCK WITH SLIDE PROTECTIVE CAP WITH FLAT ROD
MAIN MATERIAL	LOCK BODY ZINC ALLOY, CARBON STEEL FITTINGS
SURFACE TREATMENT OF LOCK BODY	BLACK
ACCESSARY SURFACE TREATMENT	BLUE WHITE ZINC PLATING WITH COLORED ZINC (SST 48-720 HOURS)
IP RATING	IP 54
HANDLE CARRYING TENSION VALUE	≤520N
HANDLE LOAD TORQUE VALUE	≤27N.m
REMARKS	SUPPORT CUSTOMIZATION

### PTICPA8008



PROJECT	DESCRIPTION
PRODUCT MODEL	LATCH LOCK WITH SLIDE PROTECTIVE CAP
MAIN MATERIAL	LOCK BODY ZINC ALLOY, CARBON STEEL FITTINGS
SURFACE TREATMENT OF LOCK BODY	BLACK
ACCESSARY SURFACE TREATMENT	BLUE WHITE ZINC PLATING WITH COLORED ZINC (SST 48-720 HOURS)
IP RATING	IP 54
HANDLE CARRYING TENSION VALUE	≤520N
HANDLE LOAD TORQUE VALUE	≤27N.m
REMARKS	SUPPORT CUSTOMIZATION

### PTICPA8009



PROJECT	DESCRIPTION
PRODUCT MODEL	LATCH LOCK SS316 WITH HOLE
MAIN MATERIAL	304 STAINLESS STEEL
SURFACE TREATMENT	BRUSHED

# Technical Summary – Materials & Surface Treatments

Materials, surface finishes, and verified salt spray resistance for durable electrical enclosures.

Material	Common Surface Treatments	Salt Spray Resistance (hours)
Zinc Alloy	Black powder coating; blue white zinc plating; mirror polishing	24–240
304 Stainless Steel	Mirror polishing; sand blast; bright chromium (where applicable)	72–720
Carbon Steel	Black powder coating; bright chromium; sand blast	24–480

## **IP Ratings & Environmental Sealing – PROTECH INDIA**

How IP ratings and surface treatments protect panels and accessories.

IP40–IP65 range covers most industrial control panel needs; IP54 and IP65 ensure dust ingress protection and resistance to water splash

IP54: protection against limited dust ingress and water splash; IP65: dust-tight and water jet resistant – critical for electrical safety

Accessory treatments: blue white zinc plating and colored zinc coatings increase corrosion and wear resistance

Combined approach: select appropriate IP rating for environment and use plating/coatings to extend lifespan and maintain operational safety



## Customization & Engineering Support

Tailored handles, locks, finishes and mechanical adaptations to meet client specs.



PROTECH INDIA offers product customization for Quarter turn lock, hinges, handles, accessories to meet client-specific requirements.



Support for tailored surface finishes, material selections, and mechanical adaptations.



Options to tune tension values, load capacities, and add unique design features.



Flexibility aids engineers optimizing control panel design for functional and compliance specifications.

# Contact PROTECH INDIA – Orders & Support

Quality control panel accessories and dedicated project support

**Address:**

#33, Yerrappa Industrial Layout,  
Dakshina Murthy Temple Road,  
Chennenahalli, Magadi Main Road,  
Bangalore - 562130, India

**Phone:** +91 9886656142

**Email ids:**

sales@protechindia.in  
info@protechindia.in  
satish@protechindia.in

**Website:**

www.protechindia.in

Our expert team is ready to support your project needs with **quality products** and **reliable service**.

